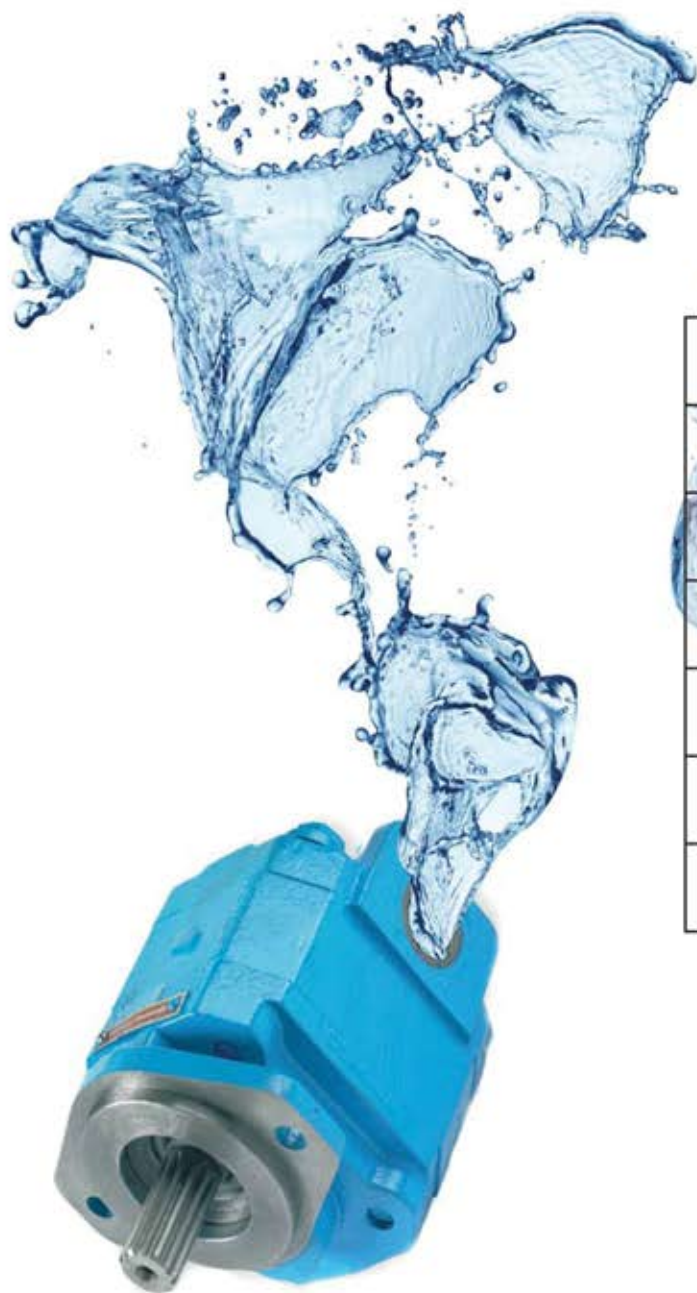


# **HYDRA-PERM-EO LTD**

**Hydraulic Engineers & Equipment Suppliers**

## **PRODUCT CATALOGUE**

*MOVING THE WORLD WITH FLUID*



<b>Gear Pumps</b>
<b>Gear Motors</b>
<b>Flow Dividers</b>
<b>Valves</b>
<b>Filtration &amp; Technology</b>
<b>Components</b>
<b>Hydraulic Repair Service</b>



ברלין טכנולוגיות בע"מ  
שדרות גן רוזה 13, יבנה, 8122214  
<http://www.berlintech.co.il/>  
[mail@berlintech.co.il](mailto:mail@berlintech.co.il)  
טלפון: 08-6638100  
פקס: 08-6638120

**e: [sales@hydra-perm.co.uk](mailto:sales@hydra-perm.co.uk)**  
**[www.hydra-perm.co.uk](http://www.hydra-perm.co.uk)**

**Unit 20, Silver Court, Intercity Way, Bramley, Leeds, West Yorkshire, LS13 4LY, UK**

## ABOUT US

**UK Distributors of Permco Cast Iron Gear Pumps, Motors & Flow Dividers since 1982. A leading manufacturer of precision engineered fluid power products**

**ISO accreditation gained in July 1998**

**Approved suppliers to renowned Original Equipment Manufacturers such as: Terex, Sandvik, Dosco & UK Coal**

**A technical sales team with over 80 years collective experience of the hydraulic industry**

**Extensive stock holding of parts to deliver a rapid service**



**BS EN ISO 9001 : 2008**

## PRODUCT RANGE

- **Hydac service partners for over 20 years with access to the complete range of innovative hydraulic solutions.**
- **Distributors of VPS Brevini Mobile Valves.**
- **Stockists of Parker / Commercial A20 and A35 Valves.**
- **Distributors of Hydreco formerly David Brown Hydraulics Q Series gear pumps and aftermarket product stockists for X Series pumps.**
- **Most recent addition to our product range is the (Evo) lution vane pumps and motors**



**ATEX assessed**  
Baseefa10ATEX0002DRR

**for the Permco gear pumps, motors and flow dividers**

*ATEX product directive 94/9/EC*

*Group II Category 2GD - II 2 GD ckb T5 T100 °c*

*Group I Category M2GD - I M2 GD ckb T5 T100 °c*

## Website

**Updated website with Live Chat option & downloadable product literature: [www.hydra-perm.co.uk](http://www.hydra-perm.co.uk). Also available in multiple languages for our international customers.**



# CONTENTS PAGE

Page Number

**Cast Iron Gear Pumps  
& Motors**



**4 - 5**

**EVO Vane Pumps  
& Motors**



**6**

**Cast Iron Gear  
Flow Dividers**



**7**

**Q Series Spur & Helical  
Gear Pumps**



**8 - 9**

**Aftermarket OEM  
Pumps & Motors**



**10**

**VPS Brevini Mobile  
Monoblock Valves**



**11**

**VPS Brevini Mobile  
Modular Valves**



**12 - 13**

**Parker / Commercial  
Valves**



**14 - 15**

**Hydac Filters &  
Fluid Power Technology**



**16 - 17**

# PERMCO

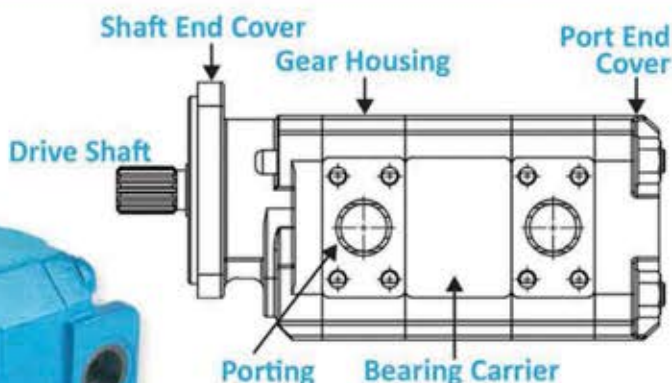
## Cast Iron Gear Pumps & Motors



ATEX assessed  
Baseefa10ATEX0002DRR



Multiple units Available



Single units Available

**Displacements**

**10 - 199 cc/rev**

**Maximum Operating Pressures**

**4500 PSI / 310 BAR**

**Maximum Operating Speeds**

**3000 RPM**

**Lower Cost,  
Same Quality**

alternative to many other  
leading manufacturers

**Cast Iron**

Construction

for Strength, Long-Life Span &  
Demanding applications

**Versatile**

Can be configured to your  
specific needs &  
requirements

**12 Month**

**Warranty**

for peace of mind  
if product  
breaks down

**Built &**

**Tested on Site**

to ensure the highest  
**quality** before  
despatch

**24 / 48 Hr**

**Turnaround**

Available in case of that  
urgent breakdown

**SPARE PARTS AVAILABLE**

**Suitable for a wide range of applications & industries**

## PERMCO ASSEMBLY CODE EXAMPLE

Repeats for Each Section									
<b>P</b>	<b>124</b>	<b>B</b>	<b>082</b>	<b>AH</b>	<b>ZA20</b>	<b>-54</b>	<b>IF</b>	<b>ZA12</b>	<b>-1</b>
Denotes (P)ump or (M)otor	Series	(A) = Single (B) = Tandem (L) = Extended Studs	Notation Code Shaft End Cover	Port End Cover (Multiple)	Gear Housing (First)	Drive Shaft	Bearing Carrier (First)	Gear Housing (Second)	Connecting Shaft

Please see our codebooks on our website for more detailed information regarding each specific code



## Mounting Options



SAE 'A' 2 Bolt • SAE 'B' 2 Bolt • SAE 'B' 4 Bolt • SAE 'C' 2 Bolt • SAE 'C' 4 Bolt  
SAE 'D' 4 Bolt • SAE 'B' 2/4 Bolt Combination • SAE 'C' 2/4 Bolt Combination  
• 4 Bolt Round • 6 Bolt Round • European 4 Bolt Group II •  
European 4 Bolt Group III • Pad Mount

## Drive Shaft Options



6 Tooth • 9 Tooth • 17 Tooth • SAE 'A' 6 Tooth • SAE 'A' 9 Tooth •  
SAE 'B' 13 Tooth • SAE 'BB' 15 Tooth • SAE 'C' 14 Tooth • SAE 'D' Splined •  
11 Tooth • SAE 'A' Keyed • SAE 'B' Keyed • SAE 'BB' Keyed • SAE 'C' Keyed  
• 3/4" Keyed • 1:8 Taper • 1.1/8" Keyed •  
European Group II • European Group III

## Various Porting Options



- JIC
- ODT
- SAE / Split Flange
- Metric Split Flange
- BSP
- Single Inlet, Single Outlet
- Single Inlet, Dual Outlet
- Common Inlet, Common Outlet
- Various Porting Sizes

## BUSHING UNITS

Compatible with mineral oil, water glycol,  
invert emulsion and fire resistant fluid.



124 / 424 Series

Displacement (cc/rev) 10 - 40\*  
Gear Widths (inches") 1/2 - 2  
Operating Speeds (RPM) 600 - 3000  
Max. Operating Pressure (PSI / BAR) 4500 / 310



197 Series

Displacement (cc/rev) 16 - 63.5  
Gear Widths (inches") 1/2 - 2  
Operating Speeds (RPM) 600 - 2400  
Max. Operating Pressure (PSI / BAR) 4500 / 310



257 Series

Displacement (cc/rev) 21 - 105  
Gear Widths (inches") 1/2 - 2.1/2  
Operating Speeds (RPM) 600 - 2400  
Max. Operating Pressure (PSI / BAR) 4500 / 310



360 / 460 Series

Displacement (cc/rev) 30 - 148  
Gear Widths (inches") 1/2 - 2.1/2  
Operating Speeds (RPM) 600 - 2400  
Max. Operating Pressure (PSI / BAR) 4500 / 310

## ROLLER BEARING UNITS

Compatible with mineral oil



1500 Series

Displacement (cc/rev) 11.9 - 47.6  
Gear Widths (inches") 1/2 - 2  
Operating Speeds (RPM) 400 - 2000  
Max. Operating Pressure (PSI / BAR) 2000 / 138



2500 Series

Displacement (cc/rev) 21 - 105  
Gear Widths (inches") 1/2 - 2.1/2  
Operating Speeds (RPM) 400 - 2000  
Max. Operating Pressure (PSI / BAR) 2250 / 155



3000 / 3100 Series

Displacement (cc/rev) 16 - 82  
Gear Widths (inches") 1/2 - 2.1/2  
Operating Speeds (RPM) 400 - 2000  
Max. Operating Pressure (PSI / BAR) 3000 / 207



3700 Series

Displacement (cc/rev) 25 - 152  
Gear Widths (inches") 1/2 - 3  
Operating Speeds (RPM) 400 - 2000  
Max. Operating Pressure (PSI / BAR) 2250 / 155



5000 / 5100 Series

Displacement (cc/rev) 21 - 115.9  
Gear Widths (inches") 1/2 - 2.3/4  
Operating Speeds (RPM) 400 - 2000  
Max. Operating Pressure (PSI / BAR) 2500 / 172



7500 / 7600 Series

Displacement (cc/rev) 33 - 199  
Gear Widths (inches") 1/2 - 3  
Operating Speeds (RPM) 400 - 2000  
Max. Operating Pressure (PSI / BAR) 2500 / 172

- Piggyback Options Available  
(Option to mount a smaller displacement pump on to the rear)
- Dowelled Units Available
- Double Bearing Options Available for Side Loaded Applications



## Displacements

5.7 - 269.8 cm<sup>3</sup>/rev

## Maximum Operating Pressures

4640 PSI / 320 BAR

## Maximum Operating Speeds

3600 RPM



**SERIES PT6C**

Displacement: 10.8 - 100 cm<sup>3</sup>/rev  
Max Pressure: 4000 PSI / 276 BAR  
Max RPM: 2800



**SERIES PT6D**

Displacement: 47.6 - 156 cm<sup>3</sup>/rev  
Max Pressure: 4060 PSI / 280 BAR  
Max RPM: 2500



**SERIES PT6E**

Displacement: 132.3 - 269.8 cm<sup>3</sup>/rev  
Max Pressure: 3500 PSI / 241 BAR  
Max RPM: 2200



**SERIES PT7B**

Displacement: 5.7 - 50 cm<sup>3</sup>/rev  
Max Pressure: 4640 PSI / 320 BAR  
Max RPM: 3600



**SERIES PT7D**

Displacement: 43.9 - 157.9 cm<sup>3</sup>/rev  
Max Pressure: 4060 PSI / 280 BAR  
Max RPM: 3600



**SERIES PM4C**

Displacement: 24.4 - 80.1 cm<sup>3</sup>/rev  
Max Pressure: 2500 PSI / 172 BAR  
Torque: 24 - 75  
Max RPM: 3600



**SERIES PM4D**

Displacement: 65 - 144.4 cm<sup>3</sup>/rev  
Max Pressure: 2500 PSI / 172 BAR  
Torque: 62 - 138  
Max RPM: 3000



**SERIES PM4E**

Displacement: 158.5 - 222 cm<sup>3</sup>/rev  
Max Pressure: 3000 PSI / 207 BAR  
Torque: 153 - 214  
Max RPM: 3000

**BUILT FOR THE  
TOUGHEST OF  
APPLICATIONS**

## EVO VANE PUMPS

- **VERSATILE APPLICATIONS**
- **LARGER FLOW**
- **HIGHER PRESSURE**  
REDUCES SIZE & COST of actuators, valves & lines. EXTENDED LIFE at reduced pressures.
- **EXCELLENT EFFICIENCY**  
Better efficiency under load  
INCREASES PRODUCTIVITY, REDUCING HEATING & OPERATING COSTS
- **FLEXIBLE MOUNTING**  
Upto 32 positions for double pumps, 128 for triple pumps. This REDUCES MOUNTING COSTS & IMPROVES PERFORMANCE
- **LOW NOISE**
- **ADVANCED CARTRIDGE DESIGN**
- **WIDE VISCOSITY RANGE**
- **SYNTHETICS**  
Wide range of fluids can be pumped at higher pressures and with LONGER SERVICE LIFE
- Available in Single, Double, Triple or Drive Train

## EVO VANE MOTORS

- **Hydraulically Balanced Design**  
INCREASES LIFE & EFFICIENCY
- **EASY REPLACEABLE** rotary kits  
Torques in same series can be easily changed by the rotary kit or cam ring.
- **Mounting Flexibility**  
Conform to ISO-3019-1 Standards
- **High Efficiency**
- **Severe duty motors available**
- **Wide range of fluids can be used in these motors**
- **RELIABILITY** proven on a wide variety of applications





Flow dividers are used to maintain consistent flow rates in different legs of a hydraulic system regardless of the pressure in each circuit. They can also be used for intensification, to operate a component at a higher pressure than the current system supplies.

# Cast Iron Gear Flow Dividers



## Displacements

10 - 199 cc/rev

## Maximum Operating Pressures

4500 PSI / 310 BAR

## Maximum Operating Speeds

3000 RPM



ATEX assessed  
Baseefa10ATEX0002DRR

**Lower Cost, Same Quality**  
alternative to many other leading manufacturers

**Cast Iron Construction**  
for Strength, Long-Life Span & Demanding applications

**Versatile**  
Can be configured to your specific needs & requirements

**12 Month Warranty**  
For peace of mind if product breaks down

**Built & Tested on Site**  
to ensure the highest quality before dispatch

## ROLLER BEARING UNITS

Compatible with mineral oil

### 3000 Series

Displacement:	16 cc/rev - 82 cc/rev
Gear Widths:	1/2" - 2"
Max. PSI / BAR:	2500 / 172
Operating Speed RPM:	400 - 2000

### 5000 Series

Displacement:	21 cc/rev - 115.9 cc/rev
Gear Widths:	1/2" - 2"
Max. PSI / BAR:	2500 / 172
Operating Speed RPM:	400 - 2000

### 7500 Series

Displacement:	33 cc/rev - 199 cc/rev
Gear Widths:	1/2" - 2.1/2"
Max. PSI / BAR:	2500 / 207
Operating Speed RPM:	400 - 2000

## PORTING OPTIONS

- JIC
- ODT
- SAE / Split Flange
- Metric Split Flange
- BSP
- Single Inlet, Single Outlet
- Single Inlet, Dual Outlet
- Common Inlet, Common Outlet
- Various Porting Sizes

## BUSHING UNITS

Compatible with mineral oil, water glycol, invert emulsion and fire resistant fluid.

### 124 Series

Displacement:	10 cc/rev - 40 cc/rev
Gear Widths:	1/2" - 2"
Max. PSI / BAR:	4500 / 310
Operating Speed RPM:	600 - 3000

### 197 Series

Displacement:	16 cc/rev - 65.5 cc/rev
Gear Widths:	1/2" - 2"
Max. PSI / BAR:	4500 / 310
Operating Speed RPM:	600 - 2400

### 257 Series

Displacement:	21 cc/rev - 105 cc/rev
Gear Widths:	1/2" - 2.1/2"
Max. PSI / BAR:	4500 / 310
Operating Speed RPM:	600 - 2400

### 360 Series

Displacement:	30 cc/rev - 148 cc/rev
Gear Widths:	1/2" - 2.1/2"
Max. PSI / BAR:	4500 / 310
Operating Speed RPM:	600 - 2400





## Q Series Spur & Helical Gear Pumps

**Displacements**

**16 - 239.8 cc/rev**

**Maximum Operating Pressures**

**4000 PSI / 280 BAR**

**Wide Range of Operating Speeds**

**450 - 3000 RPM**

**SPARE PARTS AVAILABLE**

### Spur Gear Pumps (QR Series)



**QR4 Series**

Displacement (cm<sup>3</sup>/rev) **16 - 60**  
Operating Speeds (RPM) **450 - 3000**  
Max. Operating Pressure (PSI / BAR) **4060 / 280**



**QR5 Series**

Displacement (cm<sup>3</sup>/rev) **45 - 120**  
Operating Speeds (RPM) **450 - 3000**  
Max. Operating Pressure (PSI / BAR) **4060 / 280**



**QR6 Series**

Displacement (cm<sup>3</sup>/rev) **100 - 220**  
Operating Speeds (RPM) **450 - 3000**  
Max. Operating Pressure (PSI / BAR) **4060 / 280**

**FAST**  
TURNAROUND  
Built from Stock

**Low**  
Noise  
Operation

**Suitable for**  
**RIGOROUS**  
APPLICATIONS

### Helical Gear Pumps (QS Series)



**QS4 Series**

Displacement (cm<sup>3</sup>/rev) **16 - 40.6**  
Operating Speeds (RPM) **450 - 3000**  
Max. Operating Pressure (PSI / BAR) **4060 / 280**



**QS5 Series**

Displacement (cm<sup>3</sup>/rev) **43.5 - 82.2**  
Operating Speeds (RPM) **450 - 3000**  
Max. Operating Pressure (PSI / BAR) **4060 / 280**



**QS6 Series**

Displacement (cm<sup>3</sup>/rev) **80.9 - 149.9**  
Operating Speeds (RPM) **450 - 3000**  
Max. Operating Pressure (PSI / BAR) **4060 / 280**



**QS7 Series**

Displacement (cm<sup>3</sup>/rev) **149.9 - 239.8**  
Operating Speeds (RPM) **450 - 3000**  
Max. Operating Pressure (PSI / BAR) **4060 / 280**

**Virtually**  
**SILENT**  
OPERATION

**Built from Cast Iron for Strength, LONG LASTING & COST EFFECTIVE**

**Built to your unique specifications. Wide Range of Drives, Mountings & Ports**

**Compact in Size**

**Multiple Pumps Available**

**High Quality Steel Gears**

**Up to 98% High Efficiency**



# R1A4016R4016B12A1H1A0X1AA

## Gear Type

R = Spur  
S = Helical

1 = Design Mark

## Shaft Seals

A = Seal and Wiper  
C = Seal Wiper, Seal with Tell-tale

## Frame Size

4, 5, 6, 7

## Gear Type

R = Spur  
S = Helical

## Frame Size

4, 5, 6, 7

## Displacements

R Series	DISPLACEMENT cm <sup>3</sup> /rev	DISPLACEMENT in <sup>3</sup> /rev	S Series	DISPLACEMENT cm <sup>3</sup> /rev	DISPLACEMENT in <sup>3</sup> /rev
R4016	16.0	0.975	S4016	16.0	0.975
R4019	19.0	1.158	S4023	22.2	1.341
R4023	23.0	1.402	S4027	26.1	1.585
R4027	27.0	1.646	S4032	30.9	1.884
R4032	32.0	1.951	S4037	35.8	2.183
R4038	38.0	2.317	S4042	40.6	2.476
R4045	45.0	2.746	S5045	43.5	2.652
R4053	53.0	3.230	S5051	49.3	3.006
R4060	60.0	3.660	S5060	58.0	3.537
R5045	45.0	2.746	S5070	67.7	4.128
R5053	53.0	3.231	S5085	82.2	5.012
R5063	63.0	3.841	S6083	80.3	4.896
R5073	73.0	4.451	S6097	93.8	5.720
R5085	85.0	5.183	S6113	109.3	6.665
R5100	100.0	6.098	S6132	127.6	7.780
R5120	120.0	7.317	S6155	149.9	9.140
R6100	100.0	6.098	S7155	149.9	9.140
R6117	117.0	7.134	S7180	174.1	10.615
R6137	137.0	8.354	S7208	201.1	12.262
R6160	160.0	9.756	S7248	239.8	14.622
R6187	187.0	11.402			
R6220	220.0	13.415			

## Drive Shafts

Code	Description	Frame Sizes
A	5/8" SAE A spline	4
E	5/8" SAE A parallel	4
B	7/8" SAE B spline	4 5
F	7/8" SAE B parallel	4
Q	1" SAE BB spline	4 5
H	1" SAE BB parallel	4 5
C	1.1/4" SAE C spline	5 6 7
G	1.1/4" SAE C parallel	5 6 7
T	1.1/2" SAE CC spline	6 7
N	1.1/2" SAE CC parallel	6 7
D	1.3/4" SAE D spline	7
P	1.3/4" SAE D parallel	7

## Mounting Flanges

Code	Description	Frame Sizes
1	2 bolt SAE A	4
2	2 bolt SAE B	4 5
3	4 bolt SAE B	4 5
4	2 bolt SAE C	4 5 6
5	4 bolt SAE C	4 5 6 7
7	4 bolt SAE D	7

## Front or Single Port Configuration

## Repeat for each section's porting

## Rotation

View from Shaft End  
A = Anti-Clockwise  
C = Clockwise

## SEE PORT OPTIONS BELOW

## Outlet Port Sizes

Port Code	Port Size
A	1/2"
B	3/4"
D	1"
E	1.1/16"
F	1.1/4"
G	1.5/16"
H	1.1/2"
J	1.5/8"
K	2"

## Outlet Port Type

Code	Description
1	SAE split flange - metric bolts - Code 61
2	SAE split flange - UNC bolts - Code 61
3	BSP.P thread
4	SAE UNF 'O' - ring thread

## Inlet Port Sizes

Port Code	Port Size	Port Code	Port Size
A	1/2"	H	1.1/2"
B	3/4"	J	1.5/8"
C	7/8"	K	2"
D	1"	L	2.1/2"
E	1.1/6"	M	3"
F	1.1/4"	N	4"
G	1.5/16"	X	No Port

## Inlet Port Type

Code	Description
0	No Port
1	SAE split flange - metric bolts - Code 61
2	SAE split flange - UNC bolts - Code 61
3	BSP.P thread
4	SAE UNF O'ring thread

## Inlet Port Positions

Code	Description	Single Pump	Double Pump	Dual Pump
A	Inlet port in front section	●	●	●
B	Separate inlet ports	●	●	●
C	Common inlet port	●	●	●

## Number of Pump Sections

Code	Description
1	1 Pump Section
2	2 Pump Section
3	3 Pump Section
4	4 Pump Section

# PUMP CODING

Special Features Available. Please consult Sales

**HYDRA-PERM-CO LTD**

Official Hydreco UK Distributors, that can supply locally & internationally



# HYDRECO

HYDRAULIC SOLUTIONS PROVIDER

(Formerly David Brown Hydraulics)

## Aftermarket OEM Pumps & Motors

**HYDRA-PERM-CO LTD**

Official Hydreco UK Distributors, that can supply locally & internationally

Also known  
as the Old  
Hamworthy  
Series

Suited to  
many  
leading OEM  
applications  
Such as



McCloskey



TEREX

DEMAG



## PRODUCTS

0.9 - 120 cm<sup>3</sup>/rev MAX 320 BAR



### A Series

Aluminium Gear Pumps

Can be  
mounted on  
to our  
PERMCO Gear  
Pumps

23 - 68 cm<sup>3</sup>/rev MAX 250 BAR



### QX5 Series

Helical Gear Pumps

12.38 - 41.3 cm<sup>3</sup>/rev MAX 170 BAR



### 1600 Series

Cast Iron Gear Pumps &  
Motors

22 - 74.2 cm<sup>3</sup>/rev MAX 250 BAR



### 1900 Series

Cast Iron Gear Pumps &  
Motors

58.7 - 110.8 cm<sup>3</sup>/rev MAX 250 BAR



### 2200 Series

Cast Iron Gear Pumps &  
Motors

4 - 28.1 cm<sup>3</sup>/rev MAX 280 BAR



### 1PN Series

Aluminium Gear Pumps

Can be  
mounted on  
to our  
PERMCO Gear  
Pumps



**Maximum Pressure (PSI / BAR)**

**5800 / 400**

**Maximum Flows (L/Min / GPM)**

**70 / 18.5**

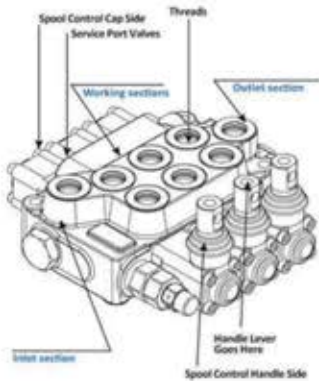
Suitable for a  
wide range of  
**Mobile  
Applications**

## Monoblock Valve Coding Example

Repeat for each working Section

**Code Prefixes**

MODEL	INLET SECTION		WORKING SECTIONS						OUTLET SECTION	THREADS
DCV . / .	IS.	.	[L.]	ST.	CS.	D.	V.	W.	U.	E.
DCV Series / No. of Sections										
Inlet										
Valves Arrangement										
Pressure Setting										
Spools										
Spool Control Handle Side										
Spool Control Cap Side										
Service Port Valves										
Handle Lever										
Outlet										
Threads										



**DCV 20**

Max. Flows (L/min / GPM) **40 / 10.6**

Max. Pressure (PSI / BAR) **5800 / 400**

Max. Sections **6**



**DCV 40**

Max. Flows (L/min / GPM) **70 / 18.5**

Max. Pressure (PSI / BAR) **5800 / 400**

Max. Sections **6**

**High  
Italian  
Quality &  
Resistant  
Materials used**  
Ensuring Long Life

**Built to  
your  
specific  
needs &  
specs**



**Maximum Pressure (PSI / BAR)**

**5075 / 350**

**Maximum Flows (L/Min / GPM)**

**230 / 60.7**



**DCV 30**

Max. Flows (L/min / GPM) **40 / 10.6**

Max. Pressure (PSI / BAR) **5075 / 350**

Max. Sections **12**



**DCV 50**

Max. Flows (L/min / GPM) **70 / 18.5**

Max. Pressure (PSI / BAR) **5075 / 350**

Max. Sections **12**



**DCV 80**

Max. Flows (L/min / GPM) **120 / 31.7**

Max. Pressure (PSI / BAR) **5075 / 350**

Max. Sections **12**



**DCV MG**

Max. Flows (L/min / GPM) **230 / 60.7**

Max. Pressure (PSI / BAR) **5075 / 350**

Max. Sections **10**

**High  
Italian  
Quality &  
Resistant  
Materials used**  
Ensuring Long Life

**Built to  
your  
specific  
needs &  
specs**

**Suitable for a  
wide range of  
Mobile  
Applications**

**Spare Parts Available if Required**





# Modular Valve Coding Example

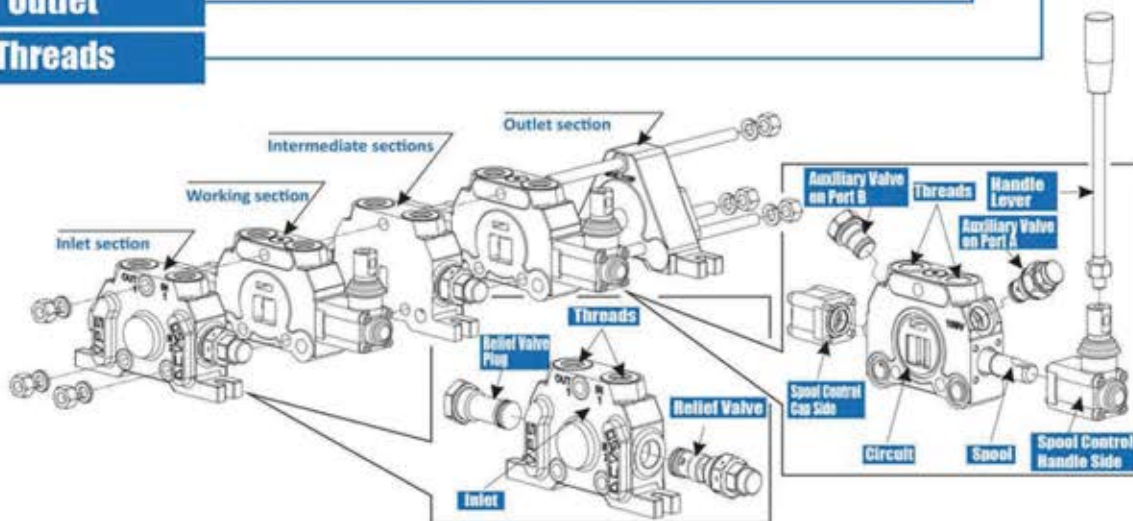
Repeat for each working section

Repeat for each intermediate section

Model	Inlet section				Working sections*								Intermediate section*		Outlet section		
DCV .. /	I	.	(...)	.	F.	ST.	CS.	D.	VA.(.)	VB.(.)	AP.	F.	W.	IM.	F.	U.	F.

DCV Series / No. of Sections
Inlet
Valves Arrangement
Main Relief Pressure Setting
Port location
Threads
Spools
Spool Control Handle Side
Spool Control Cap Side
Auxiliary valve on port A
Auxiliary valve on port B
Circuit
Threads
Hand lever
Intermediate
Threads
Outlet
Threads

Working sections & intermediate sections can appear in any sequence of the assembly.  
Use the working sections & intermediate section codes in the order they appear in the assembly







# Parker / Commercial Valves

VA20, VA35, VG20, VG35

**Maximum Pressure (BAR / PSI)**

**241 / 3500**

**Maximum Flows (L/Min / US.GPM)**

**265 / 70**



**VA20**

Max. Flows (L/min US.GPM) **151 / 40**  
Max. Pressure (BAR / PSI) **172 / 2500**



**VA35**

Max. Flows (L/min US.GPM) **265 / 70**  
Max. Pressure (BAR / PSI) **172 / 2500**

**Cast from Gray Iron for STRENGTH & LONGEVITY**



**VG20**

Max. Flows (L/min US.GPM) **151 / 40**  
Max. Pressure (BAR / PSI) **241 / 3500**



**VG35**

Max. Flows (L/min US.GPM) **265 / 70**  
Max. Pressure (BAR / PSI) **241 / 3500**

**Cast from Compacted Graphite for EXTRA STRENGTH & LONGEVITY**

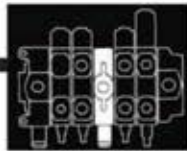
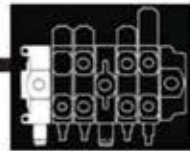
Sectional construction  
for maximum  
flexibility

Manual, Hydraulic,  
Electric or  
Pneumatic  
Operation

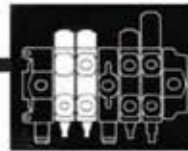
Tailored to  
your  
Unique  
Specifications



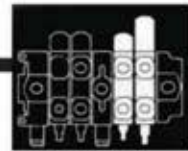
# Parker / Commercial Assembly Code Example



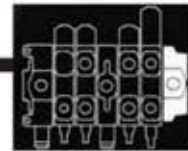
Repeat for each Mid-Inlet section



Repeat for each Lo-Boy Working Section



Repeat for each Hi-Boy Working Section



Built under  
Commercials  
SPC programme  
ensuring  
**High Quality &  
Cost Control**

**15**

Inlet Section	Mid-Inlet Sections*	LO-BOY Working Sections*	HI-BOY Working Sections*	Outlet Section
------------------	------------------------	-----------------------------	-----------------------------	-------------------

**Full Range of Spare Parts  
& Accessories Available**

Function Porting  
**A A 7 7 0**  
High High Low-  
Pressure Pressure Pressure  
Port, Port, Port,  
Side Top Bottom

## Example

**AA** Standard inlet with  
screw adjusted relief  
valve  
**7** SAE -12, High Pressure  
Port, Side  
**7** SAE -12, High Pressure  
Port, Top  
**0** No Port, Bottom  
**(2000)** Pressure Setting

Function Porting  
**C A A 7 0**  
High Low-  
Pressure Pressure  
Port, Port,  
Top Rear

## Example

**CAA** Combined flow with  
relief valve  
**7** SAE -12, high  
pressure port, Top  
**0** No Port, Rear

Functions Operator Porting  
**W D E 7**

## Example

**WD** Double acting,  
Series, Cylinder  
**E** Spring return  
operator at A port  
end  
**7** SAE-12 A & B Ports

Functions Operator Porting A & B Accessory Accessory  
**L X 7 0 0**  
Port A Port B

## Example

**L** Double acting,  
Parallel, Motor  
**X** Hydraulic Remote  
Operator  
**7** SAE -12 A & B Porting  
**4** Relief Valve  
**4** Relief Valve  
**(1000 / 1000)** Pressure Setting

Mid-Inlet, Lo-Boy &  
Hi-Boy sections can  
appear in any sequence  
of the assembly.  
Use the mid-inlet, lo-boy  
& hi-boy section codes in  
the order they appear in  
the assembly

SAE J846 Tube Coding system	
Nominal Tube O.D., Inches	Dash Size Symbol
1/2"	-8
5/8"	-10
3/4"	-12
7/8"	-14
1"	-16
1.1/4"	-20

Applicable to power  
beyond valves only

Function Porting  
**A Y 9 0 0 9 0**  
Low Low Low High High  
Pressure Pressure Pressure Pressure Pressure  
Port, Port, Port, Port, Port,  
Side Top Bottom Side Top

## Example

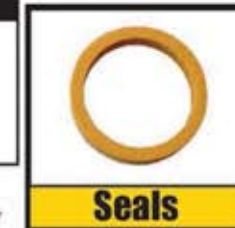
**AY** Convertible type with  
pressure beyond and  
relief valve (1500)  
**9** SAE -20 Low Pressure  
Port, Side  
**0** No port, Top  
**0** No Port, bottom  
**9** SAE -20 High Pressure  
Port, Side  
**0** No port, Top



**Handles**



**Spools**



**Seals**



**End Caps**



**Relief Valves**



**Detent Kits**



**Individual Sections**

**& MORE**

Porting Code Numbers	Description
0	No Port
1	3/4" Split Flange
2	1/2" NPT / BSP
3	3/4" NPT / BSP
4	1" NPT / BSP
5	SAE-8
6	SAE-10
7	SAE-12
8	SAE-16
9	SAE-20



As UK Hydac service partners, we can supply you Hydac's full range of filters & fluid power technology, based on your specific requirements. We can supply on a local, national or international basis.

Please see below Hydac's main product range we can supply you.



Hydac filters are one of the leading manufacturers and recognisable brands regarding filtration technology.

We can supply you Hydac filters to cater to whatever your specific filtration needs and requirements maybe, do to Hydac's extensive filters product range.

Due to the modern technology and extensive testing carried out by Hydac, a Hydac filter has many benefits such as:

long  
service  
life

Suitable for a  
wide range of  
industries and  
applications

High beta  
and  
pressure  
stability

Hydac filters INCREASE PROTECTION of components. REDUCING DOWNTIME of machinery & systems

## Filters

### Hydraulic & Lubrication

- Low Pressure Filters (100 - 360 psi)  
*Inside Tank Filters, In-Tank Filters, In Tank Duplex Filters, In-line filters, In-Line Duplex Filters, In-Tank Suction Filters, In-line Mobile Cartridge Filters.*
- Medium Pressure Filters (1000 - 1500 psi)  
*In-line Filters*
- High Pressure Filters (3000 - 6000 psi)  
*In-Line Filters, Manifold Mount / Cartridge Filters, Modular Stacking In-line Filters, Duplex Filters, In-line reverse flow filters, In-line Bi-directional Flow Filters.*
- Spin-On Filters  
*Single element / Dual element Filters*
- Breathers & Filler breathers
- Hydac Filter Elements

All types of Hydac clogging indicators.

### Offline Filtration

- Offline Filters - Kidney Loop Filters
- Compact Offline Filtration Units
- Portable Filtration Units

### Water / Process Filtration

- Stainless Steel Filters
- Back-Flush Filters

### Diesel Filtration



## Accumulators

We can supply three different types of Hydac Accumulators, in order for the accumulator to fit the application correctly. Up to 15,000 psi working pressure

- Hydac Bladder Accumulators
- Hydac Diaphragm Accumulators
- Hydac Piston Accumulators

Specialised versions of Hydac Bladder & Diaphragm accumulators are available for pulsation dampening, shock absorption & silencing

### Accessories

- Charging & Gauging Units
- Permanent Gauging Blocks
- Mounting Components for all types
- Safety & Shut-off Blocks
- Thermal Fuse Caps

## Cooling Systems

Hydac cooling systems are designed to dispel heat that is caused in hydraulic systems, when hydraulic and mechanical energy is converted to heat during the transmission / transformation process. This eliminates various losses where possible.

- Fluid-Air Cooling Systems
- Fluid-Fluid Cooling Systems
- Mobile Application Coolers
- Industrial Application Coolers
- Bell Housings with Oil-Air Coolers



## Electronics

Hydac's electronics range covers a broad range from pressure transmitters to pressure switches, with personalised software for you. With the Hydac sensors, these are tailored to your application to offer the best solution.

- Diagnostics
- Pressure Transducers
- Pressure Switches
- Temperature Transducers
- Temperature Switches
- Hazardous Environment
- Pressure Transducers & Switches
- OEM Products

- Flow Sensors
- Level Sensors
- Displays
- Fluid Condition Sensors
- Accessories



All Products CE approved and certified to ISO 9001.

**HYDAC** Products provide you with a range of benefits

Performance

Cost Effectiveness

Quality

Safety

Long Service Life

Flexibility

Total System Performance





### Filter Systems

Hydac filter systems aim to provide solutions in three different areas.

- Fluid Condition Monitoring
- Fluid Conditioning
- Technical Cleanliness.

To achieve the above results, we can supply a range of Hydac filter products / systems, for an effective solution. Please see below products.

- Mobile Filter Systems
- Measurement and Analysis Systems
- Dewatering, Degassing and Other Filter Systems
- Elements for Filter Systems
- Accessories for Filter Systems



### Valves, Clamps & Accessories

Hydac high pressure ball valves are engineered to the highest safety and are a reliable product for your operation.

- Ball Valves

We can provide Hydac's full range of customised mounting solutions of DIN 3015 clamps, if you require hose, tube or pipe mounting.

#### Clamps

- Hose Tube
- Pipe Clamps

Hyac's reservoir accessories are the products to finalise your system and have it working to its best potential

#### Accessories

- Breathers & Filler Breathers
- Test Points, Series 1620
- Fluid Level Indicators
- Suction Strainers
- Single & Multi Station Gauge
- Isolators
- High Pressure Gauges
- Split Flanges



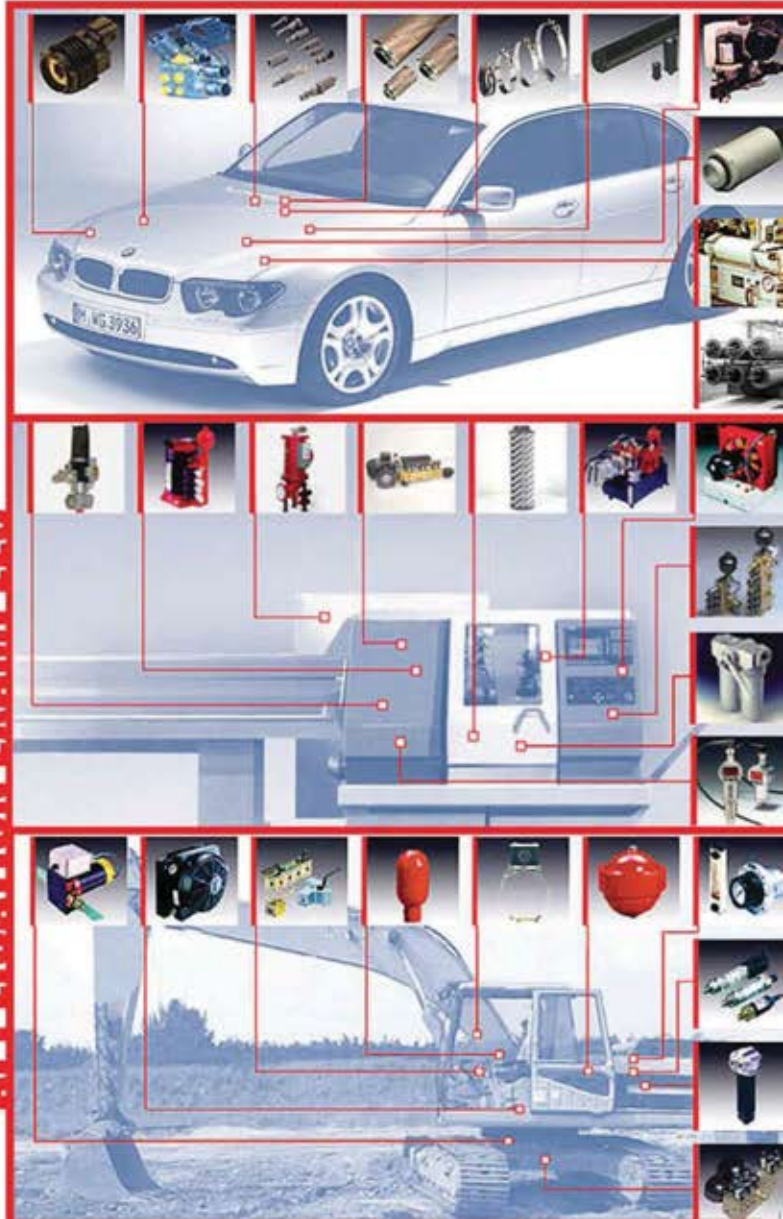
### Compact Hydraulics

Hydac's compact hydraulics technology, consists of a large range of cartridge valves, manifolds, amplifiers and compact power units.

They are a competitively priced, versatile product within the market and can handle majority of functions within the hydraulic industry.

The below products can handle up to 600 l/min and 630 BAR depending on your choice.

- Pressure Control Valves
- Flow Divider / Combiners
- Flow Control Valves
- Check Valves
- Pilot Check Valves
- Counterbalance Valves
- Hose Burst Valves
- Shuttle Valves
- Switch Solenoid Cartridge Valves
- Proportional Solenoid
- Cartridge Valves
- Hand Pump
- Solenoid Coils
- Mini Valves
- Industrial Valves
- Accessories for Industrial Valves
- Lift Lowering Manifold
- Stackable Valves
- Compact Power Units
- Amplifiers



APPLICATION EXAMPLES





***HYDRA-PERM-GO LTD***

**Official Distributors for:**

***PERMCO***

**HYDRECO**  
HYDRAULIC SOLUTIONS PROVIDER

**v.p.s.**  
**brevini**

**HYDAC**

**Stockists of A20 / A35 Valves & Spares from**



**Also competitively source products from other leading manufacturers**