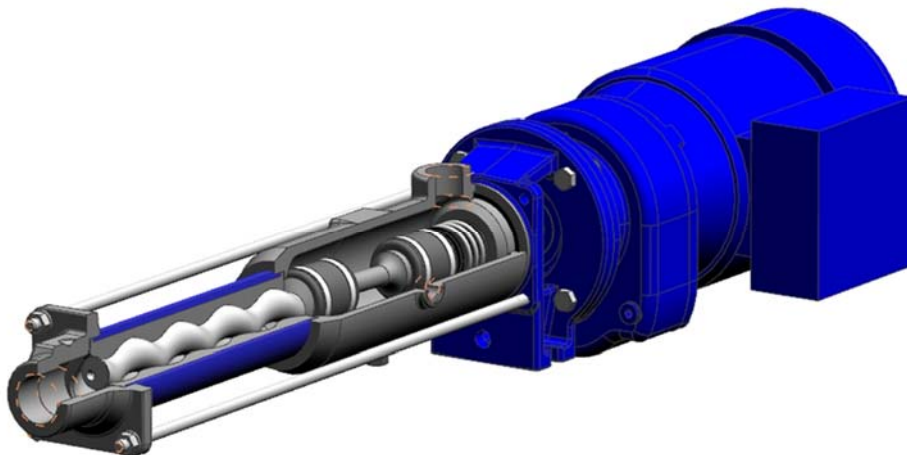


ברלין טכנולוגיות בע"מ
שדרות גן רוזה 13, יבנה, 8122214
<http://www.berlintech.co.il/>
mail@berlintech.co.il
טלפון: 08-6638100
פקס: 08-6638120

Verteiler / Distribution:	Sales Info worldwide
Produkt / Baureihe Pump Type:	Allweiler AEB-DE
Anlass/ Reason:	Product launch
Maßnahmen / Measures:	Authorization for sale AEB-DE

Dear Ladies and Gentlemen,

We are pleased to inform you about the sales launch of our new PCP dosing pump AEB-DE.



During the development of the new pump we worked to combine our extensive experience with new market requirements and customer needs.

The AEB-DE pump will be available in a compact block style design in four different sizes (1.3, 2.3, 5.3 and 12.2). A baseplate can be added as an option.

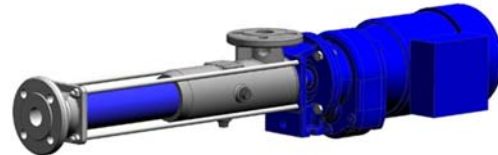
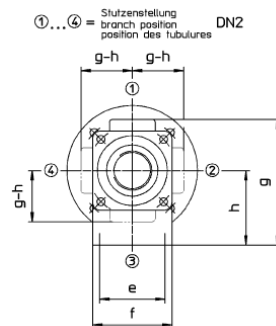
Pump connections can be selected in either a threaded or a flanged version.



Threaded Version

Acc. DIN EN 10226-1 Rp1

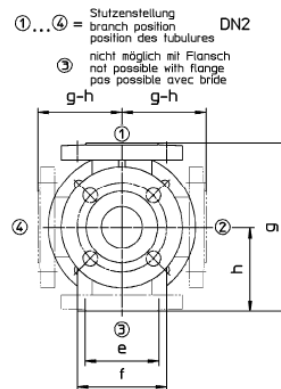
Alternative: ASME B1.20.1 NPT 1 (With screw-in adapter)



Flanged Version

Acc. DIN EN 1092 PN25 DN25

Alternative: ASME B 16.5 CH150 NPS1 (Threaded Flange)



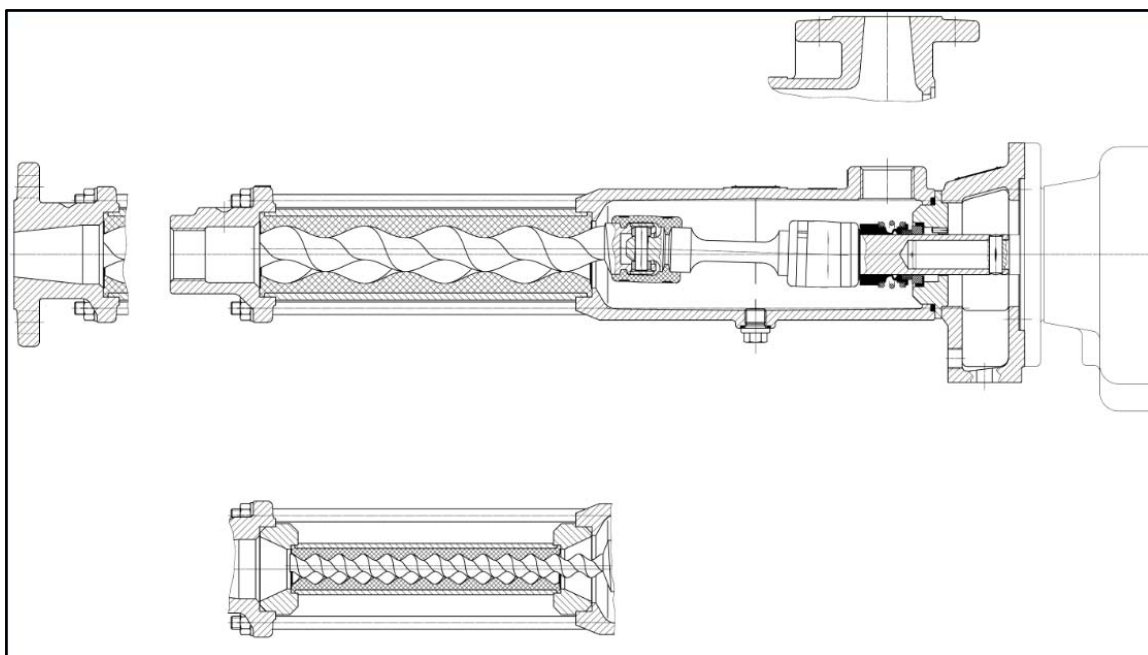
To achieve broad market coverage, the pump casings will be made of high-grade stainless steel. This material choice allows the pumps to be used in a broad range of applications. By default, the suction casing has three additional closed drillings in order to ensure a flexible use of the pump. The suction casing can be turned by 90°, while still allowing the pump to be drained safely. In addition, these connections can be used to add sensors, flush or fill the pump.

Another improvement is the positioning of the mechanical seal that is now supplied as a standard. The seal is located within the flow of liquid ensuring that it is permanently flushed and cooled. This allows the new AEB-DE to be installed horizontally and vertically without any risk of a dry run at the mechanical seal. If required, a quench can be offered as an option for the seal or alternatively the pump can be equipped with a gland packing.

To ensure a safe pump operation, our new dosing pumps can be upgraded with a dry running protection (ATLS-T1) or a pressure sensor (ATLS-P).

During the conceptual design phase, we have followed an innovative approach. The new series has only four different sizes and replaces the six sizes of the ADP/ADBP and ANP/ANBP that will be phased out. With our optimized geometries, the new pump can handle the same range of operating data without any limitation.

Another advantage of the AEB-DE is that all four sizes have identical installation dimensions. The only difference is a variation of conveying elements (Rotor & Stator) and the usage of adapters inside the pump.



This flexibility enables a flow rate variation by simply exchanging conveying elements without requiring cost intensive refurbishments and installation adjustments such as piping modifications etc.

PERFORMANCE DATA				
CAPACITY	Q		UP TO	33 l/min / 8,7 GPM
DIFFERENTIAL PRESSURE	ΔP		UP TO	24 bar / 348 PSI *
ACHIEVABLE UNDERPRESSURE	P _s		UP TO	0,9 bar / 13 PSI
OUTLET PRESSURE	P _d		UP TO	25 bar / 363 PSI
LIQUID TEMPERATURE	t		UP TO	100 °C / 212°F
LIQUID VISCOSITY	ν		UP TO	28.000 mPas
PERMISSIBLE PROPORTION OF SOLIDS	vol %		UP TO	60
* Pump size 12.2 limited to 12 bar / 174 PSI				

Following pump documentation has been created:

- Technical Manuals (English, German)
- Operating Manuals (English, German)
- Price list
- Certifications (DoC)
- Selection program
- SAP-Configuration

As usual, the documents are available on the ALLWEILER Intranet, Service Portal and Website www.circorpt.com

- PRODUCT AVAILABILITY: from 01/01/2020

As of now, the new series can be quoted with a delivery in January 2020.

For new customers and new RFQs the new pump is to be selected.

Effective from April 1st, 2020, only the AEB-DE will be quoted to give existing customers sufficient time to switch from the obsolete to the new series.

With the introduction of this new pump, the old series ADB/ADBP and ANP/ANBP will be phased out. They will only be available as replacement pumps until December 31st, 2020. Spare parts will be available without any limitation.

Even though two different series had been consolidated into one new pump, the same range of flowrates can be handled. In addition, we are enlarging the fields of applications and creating incremental customer benefits (e.g. vertical installation, identical installation space for different sizes).

Based on technical improvements and modifications related to the joints and sealing it was not possible to achieve a dimensional exchangeability.

Please inform your customers proactively about these alterations.

Please observe this product information and distribute it to all associates within your area.

Christian Martin

Senior Director Product Management

CIRCOR

ALLWEILER GmbH

Elvis Kovačević

Product Manager PC Pumps

CIRCOR

ALLWEILER GmbH