

Your specialists for standard and special containers in stainless steel



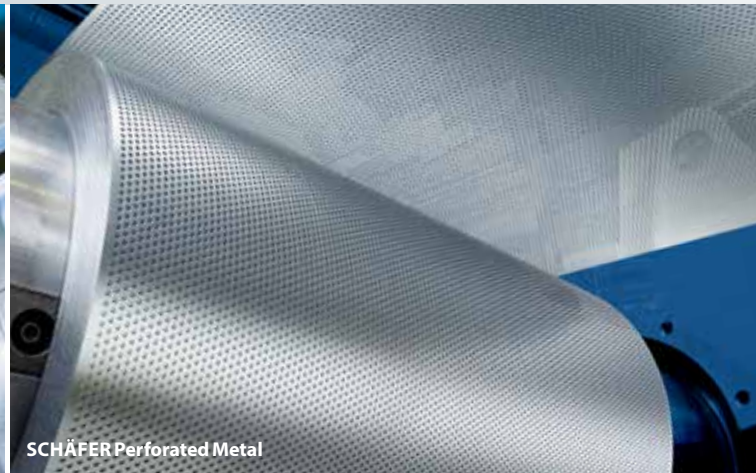
ברלין טכנולוגיות בע"מ
שדרות גן רוה 13, יבנה, 8122214
<http://www.berlintech.co.il/>
mail@berlintech.co.il
טלפון: 073-7597171
פקס: 08-6638120

www.schaefer-container-systems.com

SCHAEFER
CONTAINER SYSTEMS 



EMW Steel Service Centre



SCHÄFER Perforated Metal



SCHÄFER IT-Systems



SCHÄFER Interior Systems



SCHÄFER Industrial Solutions



SCHÄFER Container Systems

SCHÄFER WERKE – Expertise in steel processing

Within the SCHÄFER Group, **SCHÄFER WERKE** are the specialists for the development, manufacture and sale of fine steel sheet and stainless steel products. Constant growth and the uncompromising extension of the product range underline the company's successful strategy. The outstanding success of the five individual business areas lies above all in the ability to put customer wishes into practice quickly, while keeping the products themselves highly individual. At SCHÄFER, it's not a question of one thing or the other.

The extraordinary speed at which new sheet steel products can be realised stems from the close co-operation of all business areas with our own **EMW Steel Service Centre**, which, with a storage capacity of 100,000 t of fine steel sheet, can provide the coils, slit strips, cut-to-size sheets and formats required for further processing in very high quality and at very short notice.

SCHÄFER IT-Systems develops, designs and produces standardised and made-to-measure network and server cabinets, as well as data centre and water-cooled server cabinet solutions.

SCHÄFER Interior Systems develop and manufacture high-quality steel furniture for workshop and factory floor, as well as office and administration.

SCHÄFER Industrial Solutions develops, designs and manufactures customised punched and bent parts, machine cladding, special and standard housing solutions in metal.



SCHÄFER Perforated Metal supplies a broad and rapidly available range of high-quality perforated plates and sheets for all sectors and application fields.

SCHÄFER Container Systems is one of the world's leading suppliers of reusable stainless steel beverage containers for beer, wine and soft drinks, as well as for IBCs and special containers for solid and liquid substances and granulates.

Our great manufacturing expertise, our extensive range of production equipment and our employees' outstanding level of qualification make SCHÄFER the ideal partner for contract manufacturing. By working with SCHÄFER, our customers can profit from measurable time and cost-saving benefits.

I. SCHÄFER Container Systems



SCHÄFER Container Systems – the container experts

We are the competent company to contact for the following sectors:

- Chemicals and petrochemicals
- Cosmetics and pharmaceuticals
- Food industry
- Waste disposal/recycling
- Paints and lacquers
- Adhesives
- Plant construction
- Building and construction

Experienced full service supplier

Specific customer needs and safety aspects are taken into consideration right from the planning stage. With the creativity and experience of a specialised full-service supplier, our name stands for container solutions which are fully in line with market demands and customer requirements.

Your benefits

- Individual consulting
- Everything from a single source – from planning to logistics
- Our own design and development division
- In-house tool-making and device construction
- Highly efficient production equipment with flexible manufacturing potential
- High standards of quality and reliability
- Optimum price-performance ratio
- Experience in international projects



Production plant Ledeč nad Sázavou (CZ)

Location benefits in the Czech Republic

The majority of our container solutions are manufactured at Ledeč nad Sázavou in the Czech republic. For decades, the SCHÄFER plant there has had an extremely high level of welding expertise, which is currently being improved by investments in new halls and machines. This will further increase the already high levels of manufacturing flexibility with regard to batch sizes and workmanship.

SCHÄFER Container Systems' customers in Germany and other neighbouring countries also benefit from the short delivery routes from the Czech Republic as well as its attractive wage levels.



Perfect
Quality



Individual
Consulting

I. SCHÄFER Container Systems	4	VII. SLC Aseptic Containers	18
The container experts		For food products	
II. BTA Tank Containers	8	VIII. Brewery tanks	20
For liquids		For beverages	
III. RCN Round Containers	10	IX. Hazardous Goods Containers	22
For liquids		For liquids	
IV. BSI Silo Containers	12	X. Ion Exchangers	24
For bulk materials		For water processing	
V. BSIF Silo Containers	14	XI. Special Containers	26
For liquids		In stainless steel to customer specifications	
VI. Heatable Containers	16	XII. Contacts	30
For liquids		Individual Consulting	

I. SCHÄFER Container Systems



Special Containers to customers specifications



Heatable Containers RCB



SLC Aseptic Containers



Tank Containers BTA and Round Containers RCN

SCHÄFER Container Systems – expertise in development and production

Flexible and reliable

In the field of container systems, we can supply UN approved IBCs (intermediate bulk containers), heatable containers, food containers for aseptic applications and special containers in stainless steel. We deliver completely safe and reliable container systems for liquid and solid substances, especially for sectors with special requirements for transport and storage.

From perfected and officially approved standard systems, such as tank, round and silo containers, right up to tailor-made customized solutions – with SCHÄFER stainless steel IBCs your product couldn't be better protected!

Full range supplier

SCHÄFER Container Systems is a full range supplier of IBCs in various sizes. This allows many companies in the food and pharmaceuticals industries to meet their entire demand for container solutions either largely or completely from one single source. Due to this product line structure, sales staff at SCHÄFER Container Systems have gained extensive project experience, dealing not only with series products but also with customized solutions.

Quality

We attach great importance to quality assurance in all processes, from procurement of materials right up to manufacturing. Our company is certified in accordance with DIN EN ISO 9001:2008, AD 2000 HP 0, DIN EN ISO 3834-3 and 97/23/EG module D.

Maximum safety

In purchasing stainless steel IBCs, you are investing in maximum safety. They are fire resistant for at least 30 minutes without a sprinkler system. This has been tested and proven by the BAM, the Federal Institute for Materials Research and Testing.



*Stainless steel vs. Plastic:
Fire resistance test at the
Federal Institute for Materials
Research and Testing*



Extensive range of spare parts

More information on our extensive spare parts range is available for download at www.schaefer-container-systems.com

II. BTA Tank Containers



II. BTA Tank Containers

Safe stainless steel container solutions for liquids

Application

- Chemicals/petrochemicals
- Waste disposal/recycling
- Food industry
- Paints/lacquers
- Plant engineering

Tank material

Stainless steel 1.4301 / 1.4404 / 1.4571

Wall thicknesses

2.0 mm or 2.5 mm for top section, shell and bottom section

Manhole

DN 400 or DN 457 in the top section, with screwed cover and eyebolts or tension ring

Seals

According to customer requirements and/or application

Transport frame

Galvanised or stainless steel, painted on request, suitable for handling by crane or other pallet lifting equipment, stackable

Dimensions

Basic size: 1,215 x 1,015 mm, or alternatively 1,200 x 1,000 mm

Other types on request

Type	Volume (litres)	Height (mm)
BTA 425 ¹⁾	425	1,000
BTA 500 ¹⁾	500	1,080
BTA 600 ¹⁾	600	1,150
BTA 700 ¹⁾	700	1,250
BTA 800 ¹⁾	800	1,350
BTA 900 ¹⁾	900	1,450
BTA 1,000 ¹⁾	1,000	1,550
BTA 1,100 ²⁾	1,130	1,650
BTA 1,250 ²⁾	1,280	1,800
BTA 1,500 ²⁾	1,530	2,050

¹⁾ Max. density of filling substances 2.1 kg/l

²⁾ Max. density of filling substances 1.5 kg/l

Equipment

- Safety valve (pressure relief at 0.65 bar at the latest) and aeration vents in the top section
- Outlet with ball cock, disc valve or butterfly stop-valve and either a tanker coupling, camlock coupling or sealing cap
- Stacking frame for multiple stacking

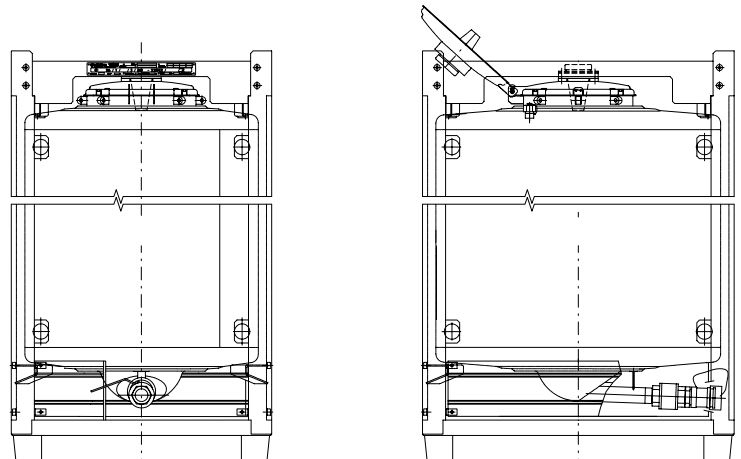
Approval

As a metal intermediate bulk container (IBC), code 31A, for land and sea transport of hazardous liquid materials of packaging groups II and III. Max. density of the filling goods is 2.1 kg/l/ 1.5 kg/l. The design fulfils the test requirements for IBCs for the transport of dangerous materials contained in the following international standards:

- European Agreement concerning the International Carriage of Dangerous Goods by Road (ADR)
- Regulations concerning the International Carriage of Dangerous Goods by Rail (RID)
- International Maritime Dangerous Goods Code (IMDG Code)
- United Nations Recommendations on the transport of dangerous goods (UN)

Optional

- Stirring devices
- Insulation
- Liquid level measurement
- Internal coating
- Cleaning systems





Reusable stainless steel container solutions for liquids

Application

- Chemicals/Petrochemicals
- Waste disposal/Recycling
- Food industry
- Paints/Lacquers
- Plant engineering

Tank material

Stainless steel 1.4301 / 1.4404 / 1.4571

Wall thicknesses

2.0 mm or 2.5 mm for the top section, shell and hopper

Manhole

DN 400 or DN 457 in the top section, with screwed cover and eyebolts or tension ring

Seals

According to customer requirements and/or application

Transport frame

Galvanised or stainless steel, sprayed on request, suitable for handling with forklift vehicles, cranes, stackable

Equipment

- Safety-valve (pressure relief at 0.65 bar at the latest) and aeration vents in the top section
- Outlet with ball-valve or butterfly-valve and either a tanker coupling, camlock coupling or sealing cap
- Stacking frame, multiple stackable

Approval

As a metal intermediate bulk container (IBC), code 31A, for land and sea transport of hazardous liquid materials of packaging groups II and III, max. density of the filling goods is 2.0 kg/l.

The design fulfils the test requirements for IBCs for the transport of dangerous materials contained in the following international standards:

- European Agreement on the International Carriage of Dangerous Goods by Road (ADR)
- Regulations for the International Carriage of Dangerous Goods by Rail (RID)
- International Maritime Dangerous Goods Code (IMDG Code)
- United Nations Recommendations on the transport of dangerous goods (UN)

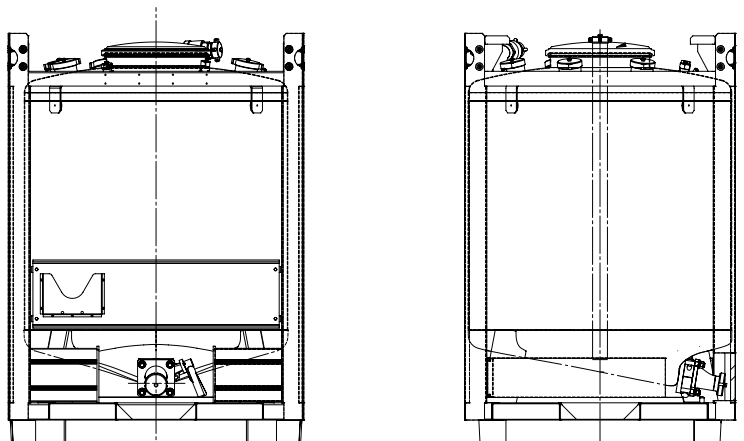
Optional

- Stirring device
- Insulation
- Liquid level measurement
- Internal anti-corrosion coating

Dimensions

Basic size 1,200 x 1,100 mm

Type	Height (mm)
RCN 500	1,100
RCN 600	1,210
RCN 700	1,320
RCN 800	1,440
RCN 900	1,550
RCN 1,000	1,670





Reusable container solutions in stainless steel for bulk materials

Application

- Chemicals/Petrochemicals
- Food industry
- Construction industry
- Plant engineering

Tank material

Stainless steel 1.4301 / 1.4404 / 1.4571

Wall thicknesses

2.0 mm or 2.5 mm for the top section, shell and bottom

Manhole

DN 400 or DN 457 in the top section, with screwed cover and eyebolts or tension ring

Hopper

30°, 45° or 60° angled slopes

Discharge diameter NW 150 or NW 250

Seals

According to customer requirements and/or application

Transport frame

Galvanised or stainless steel, sprayed on request, suitable for handling with forklift vehicles, cranes, stackable

Equipment

- Aeration and de-aeration vents in the top section
- Butterfly valves
- Stacking frame, multiple stackable

Approval

Metal intermediate bulk container (IBC), code 31A, for land and sea transport of hazardous liquid materials of packaging groups II and III, max. bulk density of the filling goods is 1.83 kg/l. The design fulfils the test requirements for IBCs for the transport of dangerous materials contained in the following international standards:

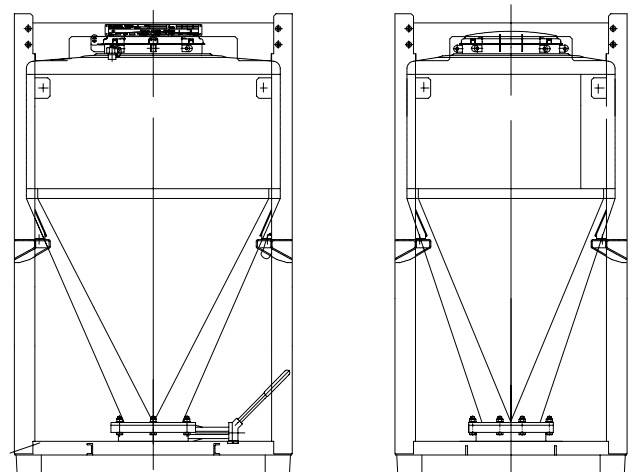
- European Agreement on the International Carriage of Dangerous Goods by Road (ADR)
- Regulations for the International Carriage of Dangerous Goods by Rail (RID)
- International Maritime Dangerous Goods Code (IMDG Code)
- United Nations Recommendations on the transport of dangerous goods (UN)

Dimensions

Basic size 1,215 x 1,015 mm,

Height in mm for outlet diameter NW 250

Type	Volume (litres)	Height (mm)	Height (mm)	Height (mm)
		30°	45°	60°
BSI 550	550	1,200	1,340	1,580
BSI 650	650	1,300	1,440	1,680
BSI 800	800	1,450	1,590	1,830
BSI 1,000	1,000	1,650	1,790	2,030





Reusable stainless steel container solutions for liquids

Application

- Chemicals/Petrochemicals
- Food industry
- Construction industry
- Paints/Lacquers
- Plant engineering

Tank material

Stainless steel 1.4301 / 1.4404 / 1.4571

Wall thicknesses

2.0 mm or 2.5 mm for the top section, shell and hopper

Manhole

DN 400 or DN 457 in the top section, with screwed cover and eyebolts or tension ring

Hopper

30° or 45° angled slopes

Seals

According to customer requirements and/or application

Transport frame

Galvanised or stainless steel, sprayed on request, suitable for handling with forklift vehicles, cranes, stackable

Equipment

- Safety-valve (pressure relief at 0.65 bar at the latest) and aeration vents in the top section
- Ball-valve or butterfly-valve, disc-valve
- Stacking frame, multiple stackable

Approval

Metal intermediate bulk container (IBC), code 31A, for land and sea transport of hazardous liquid materials of packaging groups II and III, max. bulk density of the filling goods is 1.83 kg/l.

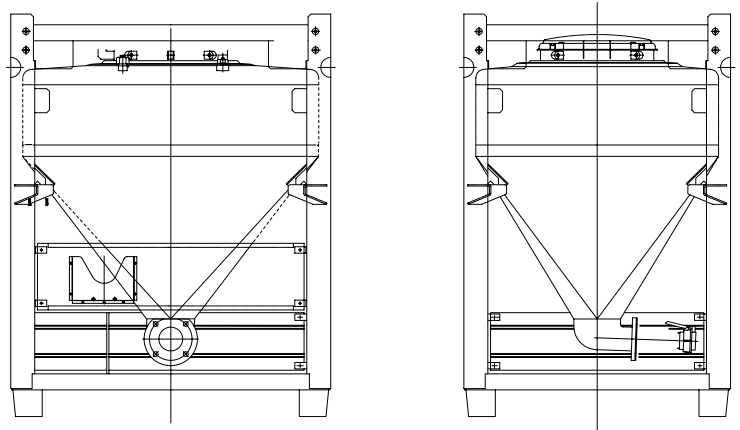
The design fulfils the test requirements for IBCs for the transport of dangerous materials contained in the following international standards:

- European Agreement on the International Carriage of Dangerous Goods by Road (ADR)
- Regulations for the International Carriage of Dangerous Goods by Rail (RID)
- International Maritime Dangerous Goods Code (IMDG Code)
- United Nations Recommendations on the transport of dangerous goods (UN)

Dimensions

Basic size 1,215 x 1,015 or alternatively 1,200 x 1,000 mm

Type	Volume (litres)	Height (mm) 30°	Height (mm) 45°
BSIF 465	502	1.200	–
BSIF 550	550	1.350	1.480
BSIF 650	650	1.450	1.580
BSIF 800	800	1.600	1.730
BSIF 900	900	1.700	–
BSIF 1.000	1.000	1.800	1.930



VI. Heatable Containers



VI. Heatable Containers

Heated container solutions in stainless steel for liquid products

Applications

- Food industry
- Pharmaceuticals
- Chemicals
- Adhesives
- Paints/Lacquers

Tank material: inner container

Stainless steel 1.4301 / 1.4404 / 1.4571

Wall thicknesses

2.0 mm or 2.5 mm for the top section, shell and hopper

Manhole

DN 400 in the top section, with screwed cover and eyebolts

Insulated container

Material: Stainless steel 1.4301

Insulation: Perlite, loose fill

Transport frame

Material: Stainless steel 1.4301

suitable for handling with forklift vehicles and cranes, stackable.

Frame can be sprayed on customer request

Drain valve

DN 80 butterfly-valve with tank/camlock coupling

or blind cap, reduction to DN 50 possible

Optional

- Stirring devices
- Liquid level measurement
- Customer specific connectors in the top section
- ATEX design for the heating device
- Internal anti-corrosion coating
- UN 31A approval for the transport of dangerous goods

Standard temperature regulation

Heating capacity	2000W / 230V
Heater circuits	1
max. product temperature	120°
Wall plug	CEE plug
Elapsed-time counter	integrated into temperature regulator
Data logger function	integrated into controller

Additional equipment: temperature regulation by touch panel

Temperature monitoring	product, heater, limitation
Safety temperature limitation	after exceeding for 1st. time, restart poss. after 60 mins. after exceeding for 2nd. time, restart by service team
Elapsed-time counter	two, total and temporary
Data logger function	rolling, data period can be limited, .txt file readable via USB interface
Programming control	using touch panel
Operator levels	PW protection, users, operators
Alarm messages	rolling, protocol visible in a matrix via touch panel
Temperature curve	rolling, the last 9 hours are displayed
Languages	operator language can be changed



Operator friendly touch panel for heater control

Dimensions

Basic size 1,200 x 1,100 mm

Type	Volumes (litres)	Height (mm)
RCB 500	500	1,100
RCB 600	600	1,210
RCB 700	700	1,320
RCB 800	800	1,440
RCB 1.000	1,000	1,670

Dimensions

Basic size 1,240 x 835 mm

Typ	Volumen (Liter)	Höhe (mm)
CHB 500	500	1,245
CHB 600	600	1,360
CHB 700	700	1,475
CHB 800	800	1,590
CHB 1.000	1,000	1,820

VII. SLC Aseptic Containers



Reusable stainless steel container for aseptic applications

Application

- Food industry
 - Fruit preparations
 - Fruit concentrates
 - Beverage ingredients
 - Aromas and essences
 - Liquid seasonings and sauces
 - Mayonnaises
 - Liquid egg products
- Cosmetics and pharmaceuticals industries

Tank material

Stainless steel 1.4301 / 1.4404 / 1.4571

Wall thicknesses

1.5 to 2.5 mm for top section, shell and bottom section

Manhole

DN 400 in the top section with bolted or bayonet ring cover

Transport frame

Profile frame or tube frame

Equipment

Manhole cover with pressure relief valve (TÜV approved) and DN 6.5 or DN 12 CO₂ valve.

DN 50 threaded connectors with cap nuts (optional)

Approval

- CE Mark in acc. with Pressure Equipment Directive 97/23 acc. to AD 2000 S5, up to 2 bar operating pressure
- Complies with Regulation (EC) No. 1935/2004

Handling

- Can be transported and stacked using all usual forklift vehicles
- Steam sterilizable, vacuum resistant
- Easy to clean

Optional

- With heating or cooling shell
- Stirring device



Bolt cover



Bayonet ring cover



Stirring device



Heating or cooling shell

Dimensions of profile frame

Other types on request

Diameter(mm)		800	1,000	
Angled slopes ¹⁾		30°	30°	45°
Type	Volume (l)	Height (mm)		
SLC 500	500	1,515	1,270	1,490
SLC 600	600	1,715	1,400	1,615
SLC 700	700	1,915	1,530	1,745
SLC 800	800	2,115	1,650	1,850
SLC 900	900	–	1,770	2,000
SLC 1,000	1,000	–	1,830	2,125

Dimensions of tube frame

Other types on request

Diameter (mm)		800	1,000	
Angled slopes ¹⁾		30°	30°	45°
Type	Volume (l)	Height (mm)		
SLC 500	500	1,518	1,230	1,520
SLC 600	600	1,718	1,340	1,650
SLC 700	700	1,918	1,470	1,775
SLC 800	800	2,118	1,600	1,900
SLC 900	900	–	1,725	2,030
SLC 1,000	1,000	–	1,810	2,135

¹⁾ Angled slopes drain hopper

VIII. Brewery Tanks



VIII. Brewery Tanks

Stainless steel containers for the beverages industry

Application

- In the beverage and brewery sector
- As fermenting, storage or transport tanks



Thermometer



Sample-taking tap



DN 50 bung pressure valve



Heating or cooling shell

Brewery tanks

Other types available on request

	Fermenting tank	Storage tank	Transport tank
Material	1.4301	1.4301	1.4301
Volume	1,000 – 5,000 L	1,000 – 5,000 L	1,000 L
Diameters	1,000 – 1,700 mm	1,000 – 1,700 mm	800 mm / 1,000 mm
Pressure	1.5 bar	1.5 bar	2.0 bar
Approvals	CE Mark in acc. with Pressure Equipment Directive 97/23	CE Mark in acc. with Pressure Equipment Directive 97/23	CE Mark in acc. with Pressure Equipment Directive 97/23
Equipment	Tap for sample taking, thermometer, valves	Tap for sample taking, thermometer, bung pressure valve, valves	Manhole with DN screwed cover, DN 400, pressure relief valve
Cooling	standard	optional	optional
Insulation	standard	optional	optional





Containers for the transport and storage of hazardous goods

Application

- Transport and storage of liquid, flammable, poisonous and corrosive materials for which transport approval in acc. with the ADR/RID and IMDG Code is stipulated

Approval

- UN approval for the transport of dangerous goods acc. to UN 1A1/X for packaging groups I, II and III

SCHÄFER Variotainer –

Polyurethane (PU)-coated stainless steel container

- Stainless steel liner in grades 1.4301 or 1.4571
- Filling and emptying via Tri-Sure or valve system
- Noise reduction due to PU coating, optimum impact protection
- Branding options: in-mould labelling and completely coloured
- Stackable
- Safety bursting point
- Foam-sealed transponder – protected from damage – not visible, therefore tamper-proof
- Optoelectronically readable Datix-Plus character coding
- CE mark in acc. with Pressure equipment directive 97/23

SUDEX Variotainer –

100 % stainless steel

- Stainless steel 1.4301 or 1.4571
- Filling and emptying via Tri-Sure or valve system
- Branding options: embossing, silk-screening, labelling, painting
- Stackable model available on request
- Transponder solution on customer request
- CE mark in acc. with Pressure equipment directive 97/23

SUDEX Variotainer, Ø 278/290 mm, Content 10-25 Litres

Content	10 l	15 l	20 l	22 l	25 l
Height	281 mm	365 mm	450 mm	484 mm	535 mm
External Ø	278 mm	278 mm	290 mm	290 mm	290 mm

SUDEX Variotainer, Ø 363/381 mm, Content 20-50 Litres

Content	20 l	22 l	30 l	33 l	50 l
Height	300 mm	330 mm	407 mm	437 mm	607 mm
External Ø	363 mm	363 mm	381 mm	381 mm	381 mm

SCHÄFER Variotainer, Ø 239 mm, Content 10-20 Litres

Content	10 l	15 l	20 l
Height	326 mm	443 mm	560 mm
External Ø	239 mm	239 mm	239 mm

SUDEX Variotainer, Ø 395/408 mm, Content 20-50 Litres

Content	20 l	22 l	30 l	33 l	50 l
Height	286 mm	302 mm	365 mm	390 mm	532 mm
External Ø	395 mm	395 mm	408 mm	408 mm	408 mm

SCHÄFER Variotainer, Ø 372 mm, Content 22-50 Litres

Content	22 l	33 l	50 l
Height	337 mm	445 mm	612 mm
External Ø	372 mm	372 mm	372 mm

SUDEX Variotainer, Ø 395/408 mm, Content 66-110 Litres

Content	66 l	85 l	110 l
Height	664 mm	820 mm	1027 mm
External Ø	408 mm	408 mm	408 mm



X. Ion Exchangers

Ion exchanger for regenerable resin mixtures

Application

- Water processing (de-ionisation, radiator filling, supplying industrial dish washing and coffee machines, laboratory technology)

Ion exchangers as polyurethane (PU)-coated stainless steel containers

- Material: stainless steel 1.4571 (standard) or 1.4301
- Equipment: stainless steel filling and emptying system, or as an alternative, the innovative MONOBLOC system is available in a robust plastic design
- Safety bursting point
- Branding options: in-mould labelling and completely coloured
- Stackable
- Shock absorber effect
- Noise reduction
- Ergonomic handling
- Foam-sealed transponder

Stainless steel ion exchangers with top and bottom rings in PP

- Material: stainless steel 1.4571 (standard) or 1.4301
- Equipment: stainless steel filling and emptying system, or as an alternative, the innovative MONOBLOC system is available in a robust plastic design
- Safety bursting point
- Coloured, replaceable top and bottom rings in polypropylene (PP)
- Branding options: embossing, silk-screening, labelling, painting
- Stackable
- Shock absorber effect due to PP top and bottom rings
- Transponder can be installed in top ring (pouch)

Filling and emptying system

MONOBLOC



Standard



Standard



Standard oval



- Neck RD 58 x 1/8"
- 2 necks G 3/4"
- RD 58 1/8" plug with G 1/4" venting screw
- 2 G 3/4" double nipples
- One filling and drainage pipe each with nylon fabric

SCHÄFER PU-coated ion exchanger, Content 10 - 50 l

Content	10 l	15 l	20 l	50 l
Height	326 mm	443 mm	560 mm	612 mm
External Ø	239 mm	239 mm	239 mm	372 mm

SCHÄFER stainless steel ion exchanger with PP rings, Content 10 - 46 l

Content	10 l	15 l	20 l	26 l	40 l	46 l
Height	326 mm	445 mm	562 mm	699 mm	1,023 mm	1,164 mm
External Ø	239 mm	239 mm	239 mm	239 mm	239 mm	239 mm



Tailor-made container solutions in stainless steel to customer specifications

Our great manufacturing expertise, extensive production equipment and the outstanding qualification and experience of our employees make us the ideal partner for developing, designing and manufacturing container solutions specially geared to your individual requirements.

If you need a stainless steel container manufactured for your specific needs, why not contact us? We will be happy to advise you!

Telephone +49 (0) 2735/787-578

cermert@schaefer-container-systems.de



Container for mercury

XI. Special Containers



Container for pharmaceutical products



Container for animal feed

Individual designs tailored perfectly to fit precise requirements



Container for foodstuffs



Container for use with chemicals

Individual consulting

If you would like more information on our standard and special containers in stainless steel, feel free to contact us at any time. We'll also be happy to offer you individual advice at your own premises.

Sales Divisional Management

Christof Ermert

Authorized signatory

Sales Director

Tel.: +49 (0) 2735/787-578

Fax: +49 (0) 2735/787-580

Mobile: +49 (0) 160/97218799

E-Mail: cermert@schaefer-container-systems.de

Sales

Marco Helmke

Tel.: +49 (0) 2735/787-576

Fax: +49 (0) 2735/787-580

E-Mail: mhelmke@schaefer-container-systems.de

Julia Claßen

Tel.: +49 (0) 2735/787-508

Fax: +49 (0) 2735/787-580

E-Mail: jclassen@schaefer-container-systems.de

Birgid Bauer

Tel.: +49 (0) 2735/787-596

Fax: +49 (0) 2735/787-580

E-Mail: bbauer@schaefer-container-systems.de

BENELUX

Peter Bouman

J.M.E. Industries B.V.

Campagneweg 11 M / Postfach 65

4761 RM / 4780 AB Zevenbergen

The Netherlands

Tel.: +31 (0) 168/331-475

Fax: +31 (0) 168/331-479

Mobile: +31 (0) 625/005030

E-Mail: bouman@jme-bv.com

www.jme-bv.com

Spain

Marck Manich

Manich-Ylla, s.a. Ingenieros

C/Ausiàs March 47

08010 Barcelona

Spain

Tel.: +34 (0) 932478890

Fax: +34 (0) 932478891

E-Mail: ingenieros@manich-ylla.com

www.manich-ylla.com

Chile

Alejandra Bárzana Schaumburg

Mawünko SpA

Avda. Kennedy 5146, oficina 52

Vitacura, Santiago de Chile

Chile

Tel.: +562/22192920

Fax: +562/22191442

Mobile: +569/76351521

E-Mail: alejandra.barzana@mawunco.com

www.mawunco.com

Great Britain / Ireland

Laurence Griffiths

CLA Containers

22 Back lane, Stonesby

Melton Mowbray Leicestershire

LE14 4PT

United Kingdom

Tel.: +44 (0) 1664/464-227

Fax: +44 (0) 1664/464-001

E-Mail: info@ibcccontainers.co.uk

www.ibcccontainers.co.uk

Poland

Tadeusz Gonciarczyk

KEG SERVIS

Ul. Wałowa 3

51-523 Wrocław

Poland

Tel.: +48/71 34 666 32

Fax: +48/71 34 666 88

Mobile: +48/505 154 152

biuro@keg-service.pl

The Czech Republic,

Republic of Slovakia

Jiří Poláš

SCHÄFER SUDEX s.r.o.

Podolí 5

58401 Ledec nad Sázavou

The Czech Republic

Tel.: +420 569711-271

Fax: +420 569711-292

Mobile: +42 (0) 727/825198

E-Mail: jpolas@schaefer-sudex.cz



Our Production locations



Head office and production site at Neunkirchen (D)



Plant Betzdorf (D)



Plant Ledec nad Sázavou (CZ)

SCHÄFER Container Systems, the specialists for stainless steel IBCs for liquids, pastes and solid bulk materials, is part of the internationally successful SCHÄFER WERKE group.

This owner-led group of companies has its headquarters in Neunkirchen in Germany's Siegerland region. The work of all the SCHÄFER WERKE divisions – SCHÄFER Container Systems, SCHÄFER IT-Systems, SCHÄFER Industrial Solutions, SCHÄFER Interior Systems, SCHÄFER Perforated Metal, EMW Steel Service Centre – is based on high-quality thin steel sheet. The processing of this material is one of the core competencies of this enterprise.

