



## AIR TECHNOLOGY SOLUTIONS FOR DEMANDING APPLICATIONS

Product overview



ברלין טכנולוגיות בע"מ  
שדרות גן רוהה 13, יבנה, 8122214  
<http://www.berlintech.co.il/>  
[mail@berlintech.co.il](mailto:mail@berlintech.co.il)  
טלפון: 073-7597171  
פקס: 08-6638120

# SET BENCHMARKS NOW.

Efficient and high-performance solutions from one source.



For the past 90 years Elektror airsystems stands for high-performance products and system solutions when it comes to making air used efficiently as an operating medium in industrial processes. We are always considering holistically and combine extraordinary product quality with competent support for integration and individual configuration. These in-depth service features make us unique for many customers. Efficient production is the key to success.

Our production facilities are frequently described as exemplary. We manufacture to the highest precision and reliable quality as our demands to the brand Elektror is clearly defined: we want to be the best! For this reason we have established expert teams for all specialists departments who are well able to cope with these requirements in a highly professional and competent manner.







Whether in the headquarters in Ostfildern or in the production centres Waghäusel and Chorzów (PL), we strive for perfection every day. Elektror airsystems combines the benefits of a medium-sized company with the performance of a Global Player in a particularly special way.

Efficiency is just as important for us as flexibility and customer-specific adaptations. With a worldwide sales and service network, we are always around the corner from our customers. As we understand individuality as an adapted perfection, we are never confronted with the question serial product or customer tailored? We offer both and always stay efficient in that way.



# THE ALL-ROUNDER

Radial blowers with aluminium housing



## Possible versions:

- ATEX
- Media temperatures up to 230°C
- Increased protection class
- Sealed
- Suitable for frequency converters
- External drive
- Multiple certificates (UL, GOST, UR/CSA)
- Other special versions available on request

## Application examples:

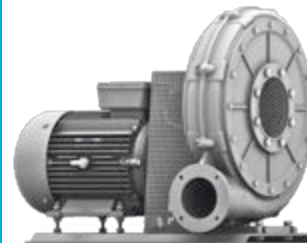
- Air cushion tables
- Cooling
- Ventilation
- Drying

ND

RD

HRD

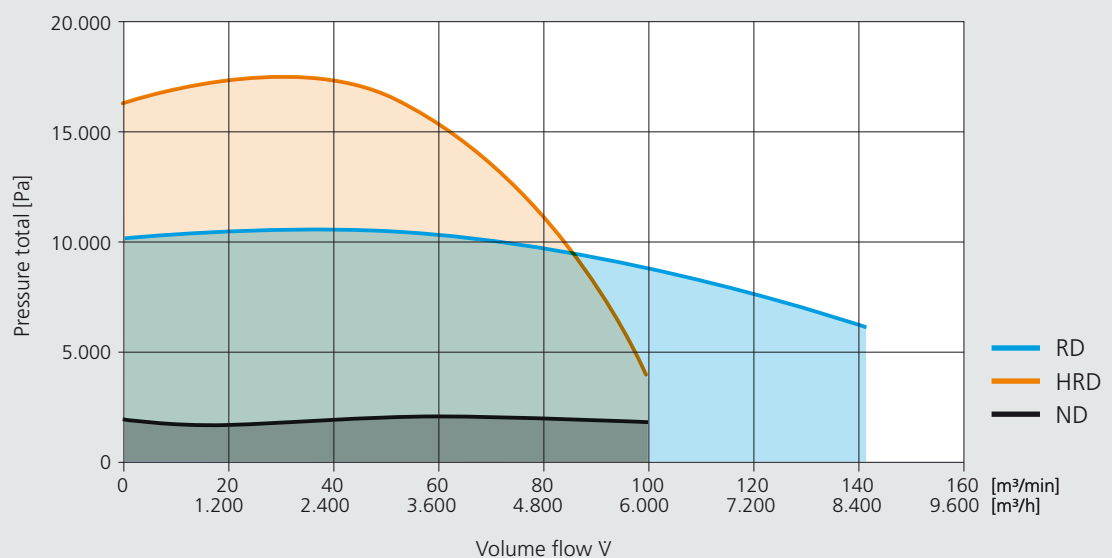
HRD FUK



These product groups that have been proven and tested for decades are characterised by a robust and durable housing made from aluminium.

Thanks to the wide performance range, it offers a very wide scope of applications. There is a wide range of accessories available in order to equip the blowers according to individual requirements.

## Characteristic curve diagram



# THE RESISTANT

Radial blowers with stainless steel housing

## Possible versions:

- ATEX
- Media temperatures also beyond 300°C
- Increased protection class
- Suitable for frequency converters
- Condensed water borehole
- Multiple certificates (UL, GOST, UR/CSA)
- Other special versions available on request

## Application examples:

- Food industry
- Pharmaceutical industry
- Process engineering
- Traffic engineering

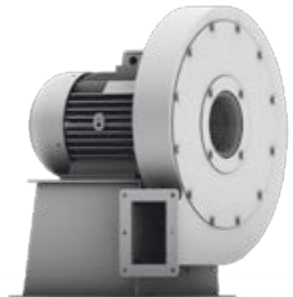
S-LP



S-MP



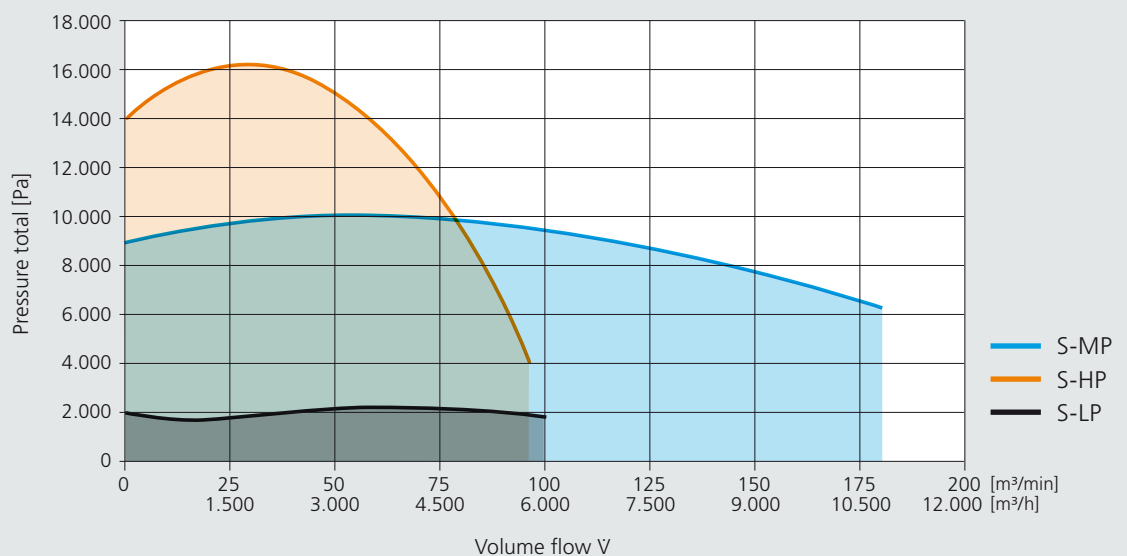
S-HP



As the name suggests, the installation and operation conditions represent high demands, this product range sets an example. The laser welded stainless steel housing made from 1.4301 are particularly resistant against many different chemicals and other aggressive substances.

It can also be applied in such areas where corrosion protection is required and there are even technical solutions for high media temperatures.

## Characteristic curve diagram



# THE LARGE-VOLUME

Centrifugal fans with stainless steel housing



## Possible versions:

- ATEX
- Media temperatures up to 750°C
- Increased protection class
- Application-orientated materials
- Suitable for frequency converters
- Noise insulation
- Inspection openings
- Condensed water borehole
- Multiple certificates (UL, GOST, UR/CSA)
- Other special versions available on request

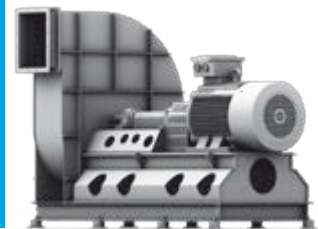
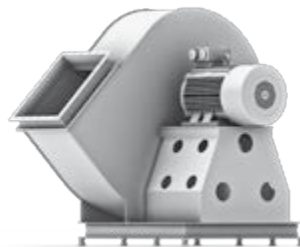
## Application examples:

- Exhaust air cleaning
- Painting plants
- Drying engineering
- Process engineering
- Ventilation

### Direct drive

### Belt drive

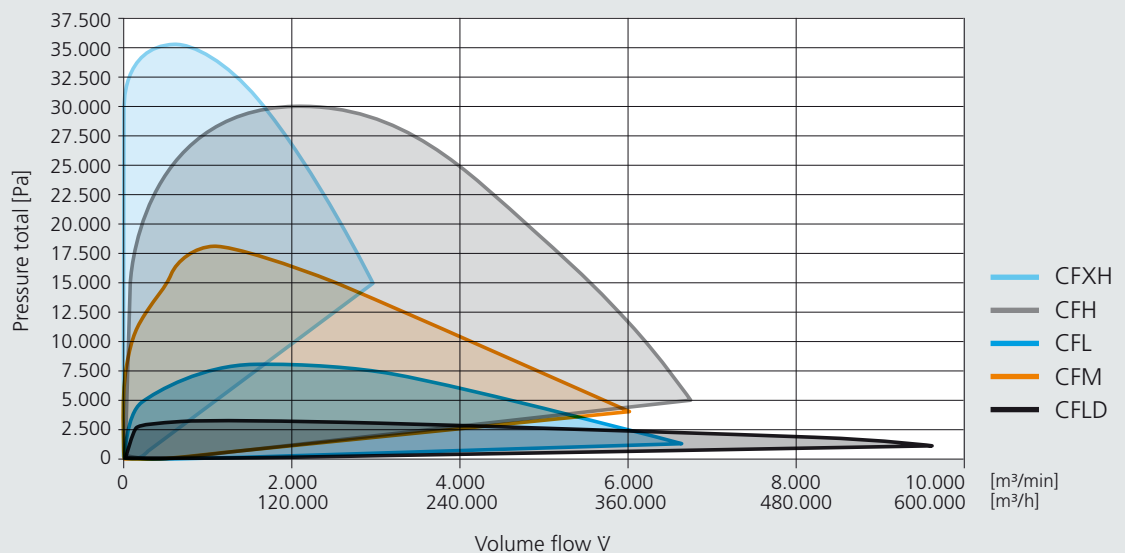
### Coupling drive



Wide performance spectrum in combination with economical operation. The welded and exceptionally robust fans of series CFL to CFXH are typical industry products and are available in different materials. They have a very high efficiency and are dimensioned precisely to the operating points selected by the customers.

We should emphasise the particularly user specific various designs, such as e.g., direct, coupling or belt drives that are available for all series. Moreover, thermal or acoustic insulation measures are optionally available.

## Characteristic curve diagram





# THE FORCEFUL

## Side channel blowers

### Possible versions:

- Suitable for frequency converters
- IE 2 - energy efficiency
- Winding protection
- Special coatings
- External drives are possible
- Multiple certificates (UL, GOST, UR/CSA)
- Other special versions available on request

### Application examples:

- Pick and Place
- Water processing
- Packing engineering
- Pneumatic conveying systems
- Rail engineering

SD



2SD



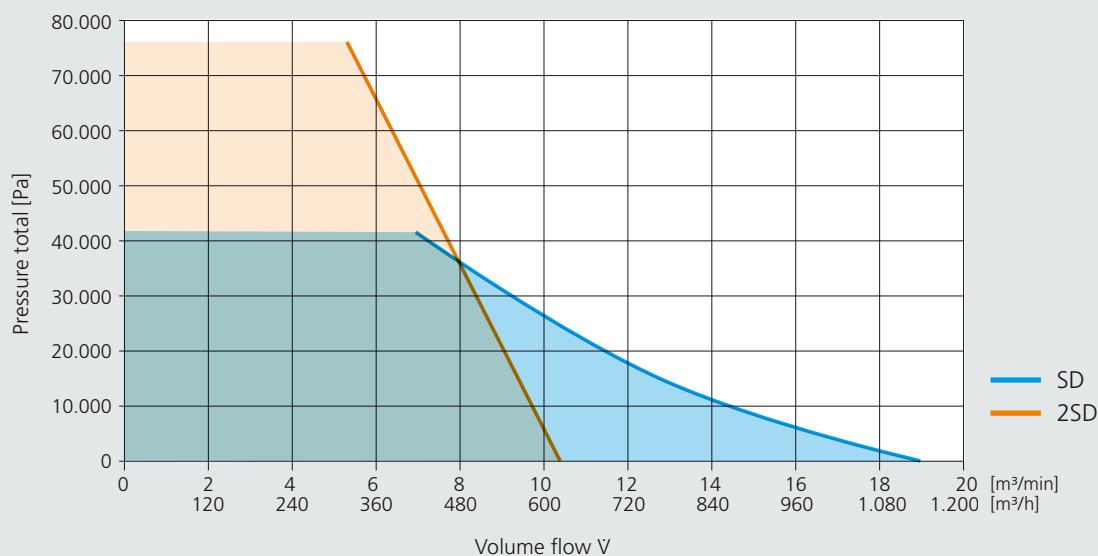
SD FUK



Side channel blower from Elektror airsystems – a real classic for many. This product group has been proving itself for years, even under the hardest conditions. The housing made from aluminium cast is also a typical feature just as the one or double stage version.

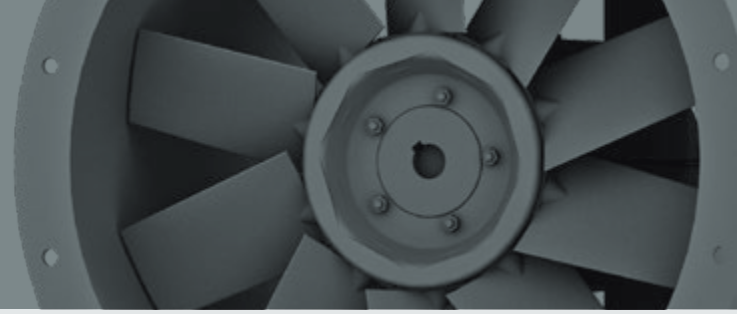
The side channel blowers are equally suitable for high negative and positive pressures.

### Characteristic curve diagram



# THE LINEAR

## Axial fans



### Possible versions:

- ATEX
- Media temperatures up to 230°C
- Increased protection class
- Suitable for frequency converters
- Multiple certificates (UL, GOST, UR/CSA)
- Other special versions available on request

### Application examples:

- Food industry
- Circulating air applications
- Ventilation

### MAF



### HAFC



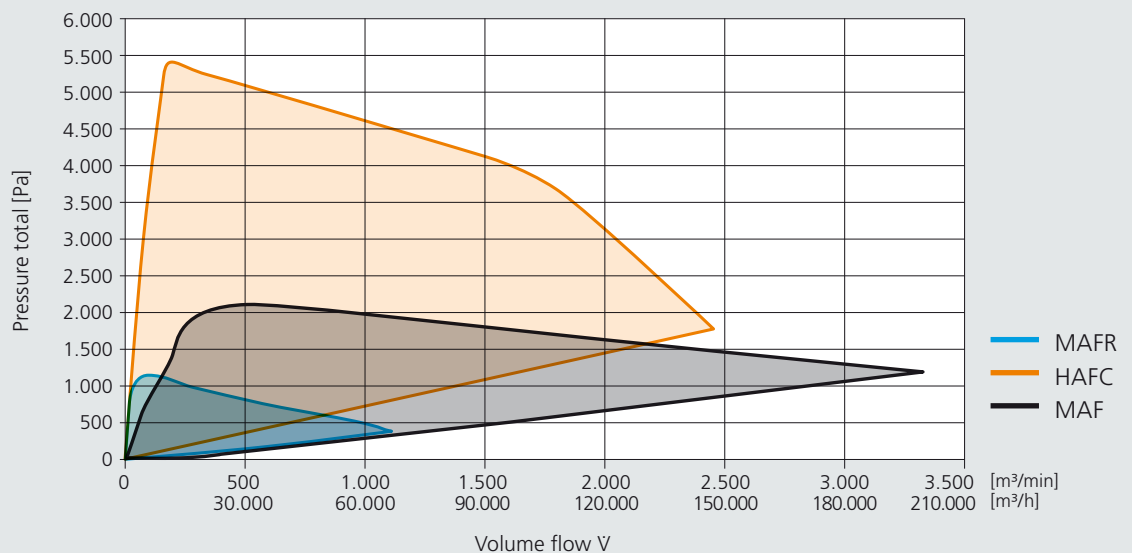
### MAFR



Elektror axial fans are used in a wide variety of areas. The robust versions are available as direct drive, belt drive as well as weather protected roof fans.

Moreover, special application-related versions as well as thermal or acoustic insulation measures can be implemented here.

### Characteristic curve diagram





# THE INTEGRATEABLE

## Plug fans



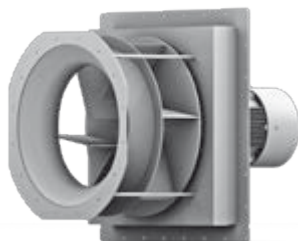
### Possible versions:

- ATEX
- Media temperatures up to 750°C
- Increased protection class
- Suitable for frequency converters
- Application-specific materials
- Thermal insulation
- Multiple certificates (UL, GOST, UR/CSA)
- Other special versions available on request

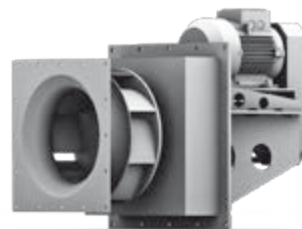
### Application examples:

- Furnace construction
- Painting plants
- Drying and cleaning plants
- Air conditioning technology

### PFM/PFL direct drive



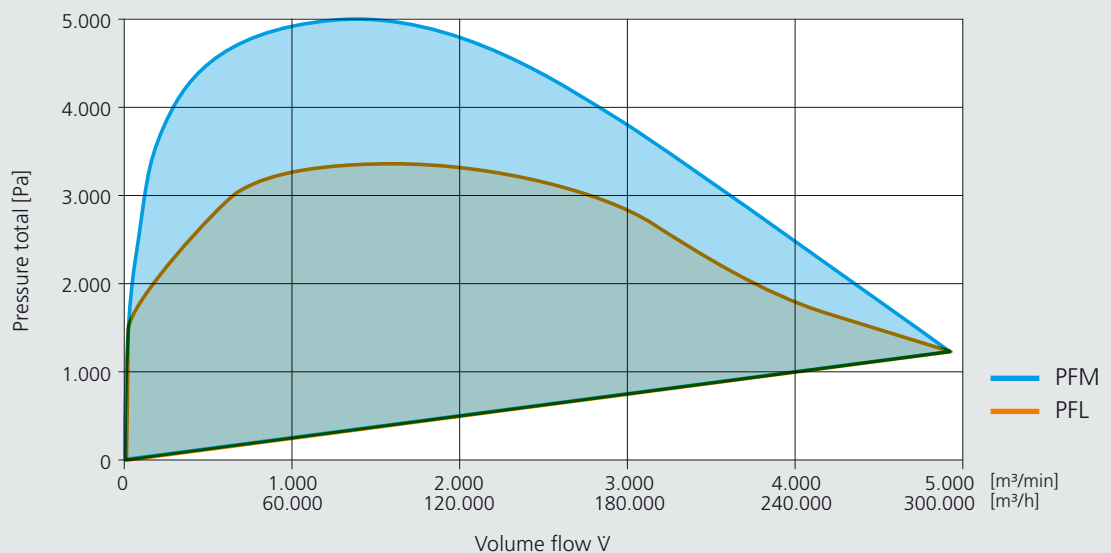
### PFM/PFL belt drive



Special installation situations require solutions that are well thought-out. Integrated applications are frequently carried out customer-specifically where a conversation with our experts is worthwhile.

Naturally, direct as well as belt drives are also available. Adapted thermal or acoustic insulation measures are a particularly important option here.

### Characteristic curve diagram



# THE ECONOMICAL

## High Efficiency blowers

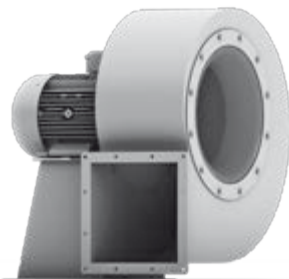
### Possible versions:

- ATEX
- Media temperatures also beyond 300°C
- Increased protection class
- Suitable for frequency converters
- Stainless steel version (1.4301)
- Multiple certificates (UL, GOST, UR/CSA)
- Other special versions available on request

### Application examples:

- Cleaning technologies
- Textile industry
- Clean room technology
- Ventilation
- Wind power plants

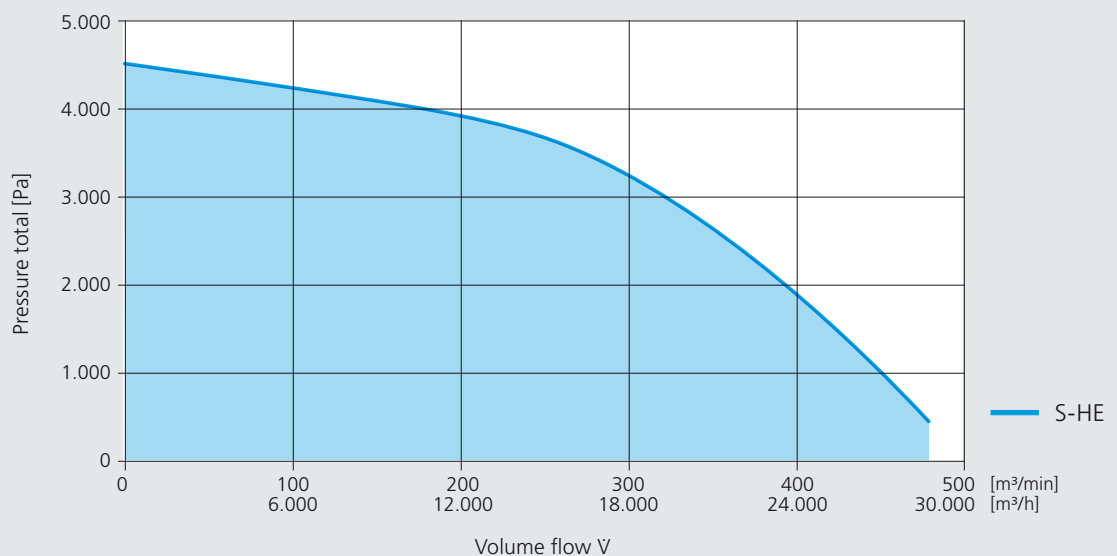
### S-HE



A good energy performance requires the efficient use of energy. Elektror offers this series for a resources-conserving operation of the system. High efficiency blowers are characterised by the accurate operating point and efficiency-optimised dimensioning.

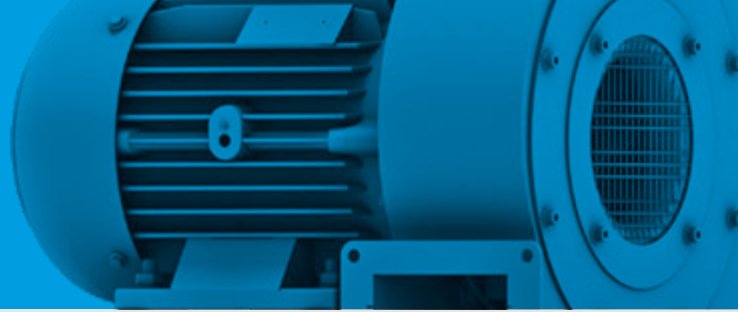
Besides the series, the design of the housing made from sheet steel also offers a good possibility for being adapted to customer-specific adaptations, e.g., also into stainless steel (1.4301).

### Characteristic curve diagram



# THE POWERFUL

## High-speed blowers



### Possible versions:

- Hybrid ball bearing
- Sensor monitoring
- Noise insulation
- Media temperatures up to 80°C
- Other special versions available on request

### Application examples:

- Manufacturing glass
- Bottle drying
- Textile cutting tables
- Manufacturing of corrugated paper

### S-XP



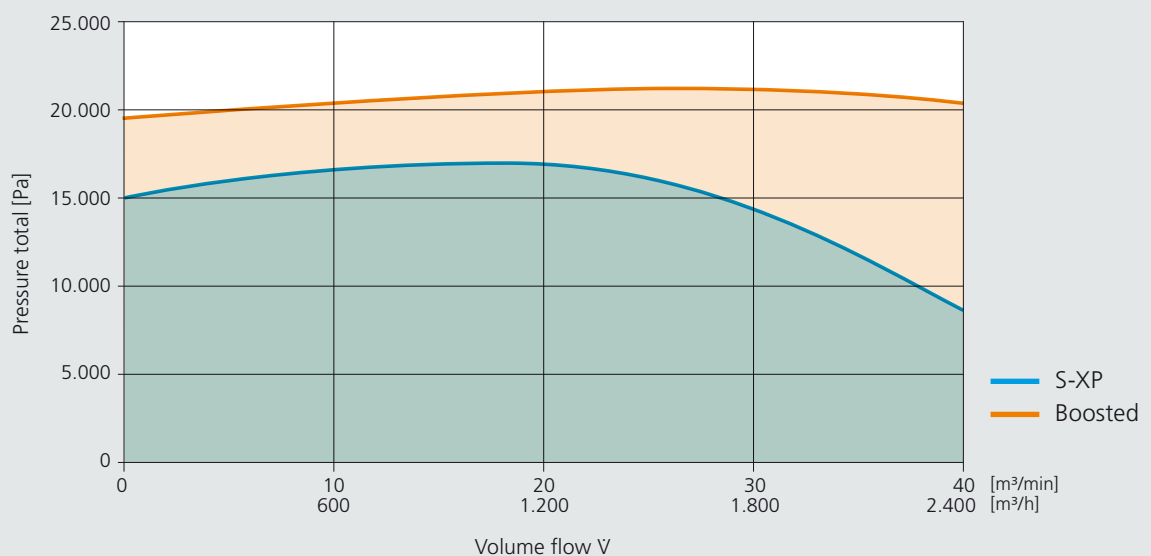
### HRD Boosted



Sometimes it is just down to a millimetre. A lot of power does not always mean a large-format version. With a series of high-speed blowers, Elektror offers devices that combine the enormously high power density with an extremely compact design. Speeds up to 12,000 rpm are achieved by using frequency converters.

A high bearing life and an extremely impeller stability characterise these devices. Naturally, these blowers can also be equipped with effective acoustic insulation solutions.

### Characteristic curve diagram



# THE TRANSPORTER

## Conveying blowers/fans



### Possible versions:

- Media temperatures up to 230°C
- Increased protection class
- Vibration monitoring
- Suitable for frequency converters
- Multiple certificates (UL, GOST, UR/CSA)
- Other special versions available on request

### Application examples:

- Conveying granules
- Conveying bulk materials
- Transporting film

### RD F



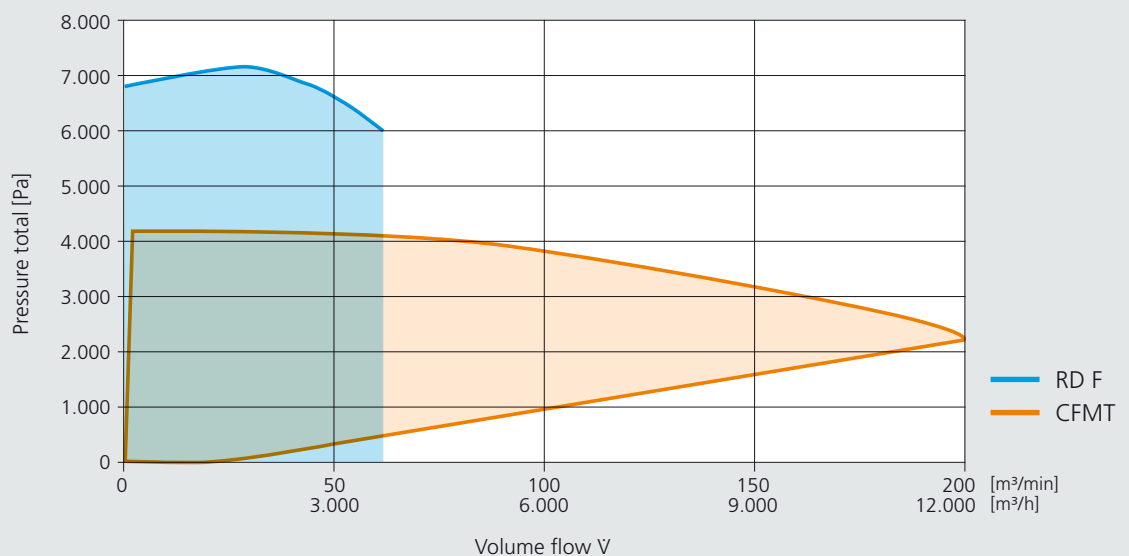
### CFMT



Conveying blowers/fans from Elektror are equipped with a special impeller geometry to allow different materials to be conveyed directly and reliably. You can choose between aluminium or steel housings.

The steel housings are available in different materials and are predestined for customization.

### Characteristic curve diagram





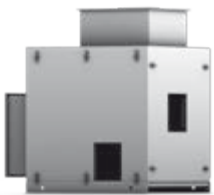
# FULL OF BENEFITS

## Accessory components

### Possible versions:

- Special accessories for ATEX versions
- Different customer-specific accessory solutions

### Noise reduction



- Noise insulation hoods
- Noise insulation cabins
- Disc-type silencers
- Duct-type silencers

### Connection, Attachment, Assembly



- Connecting system components
- Adapter elements
- Intermediate elements
- Flanges
- Pressure and intake connectors
- Inlet nozzles
- Y-sections

### Control, Regulation, Throttling



- aircontrol
- Frequency converter in a switch cabinet and mounted version
- Pressure control valves
- Throttle valve
- Automatic reversing unit

### Vibration reduction



- Bonded rubber buffer
- Rubber vibration damper
- Spring-type vibration damper
- Vibration sensors
- Compensators
- Collars

### Application



- Air Knife
- Filter



# ONE-OF A KIND

## Customized blowers

Standard products can do a lot, but not everything. In some cases customer-specific solutions lead to the desired results. We are more than happy to confront all technical challenges together with our customer. With our first-class engineering competence in all aspects of air technology systems, we develop just the solution that satisfies the uniqueness of our customers.

Thanks to our experience for many years we are also able to make an exceptionally pragmatic approach to tailored solutions. In this way, we are very frequently able to be unique from the innovative idea up to the individual solution, even from an economical point of view. Elektror airsystems is a reliable and present partner from the first phase of the project.



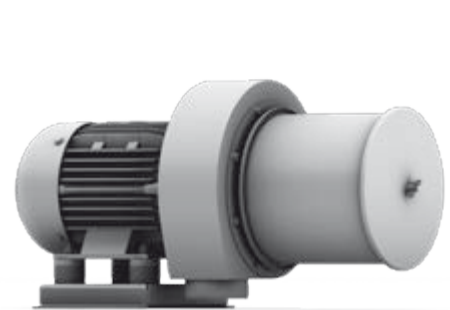
### **S-MP 480/40 – 50/3,7 SLS**

Max. volume flow 22 m<sup>3</sup>/min, max. pressure increase 5,800 Pa, special customer-specific stainless steel fan with different openings for maintenance, special pressure flange and stainless steel motor, used in the food industry for drying salad after being washed.



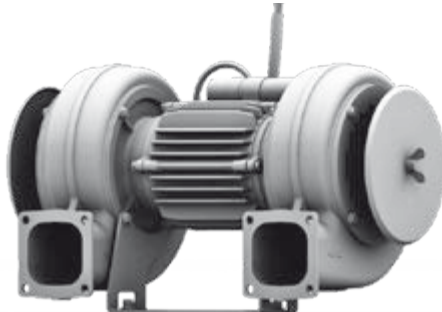
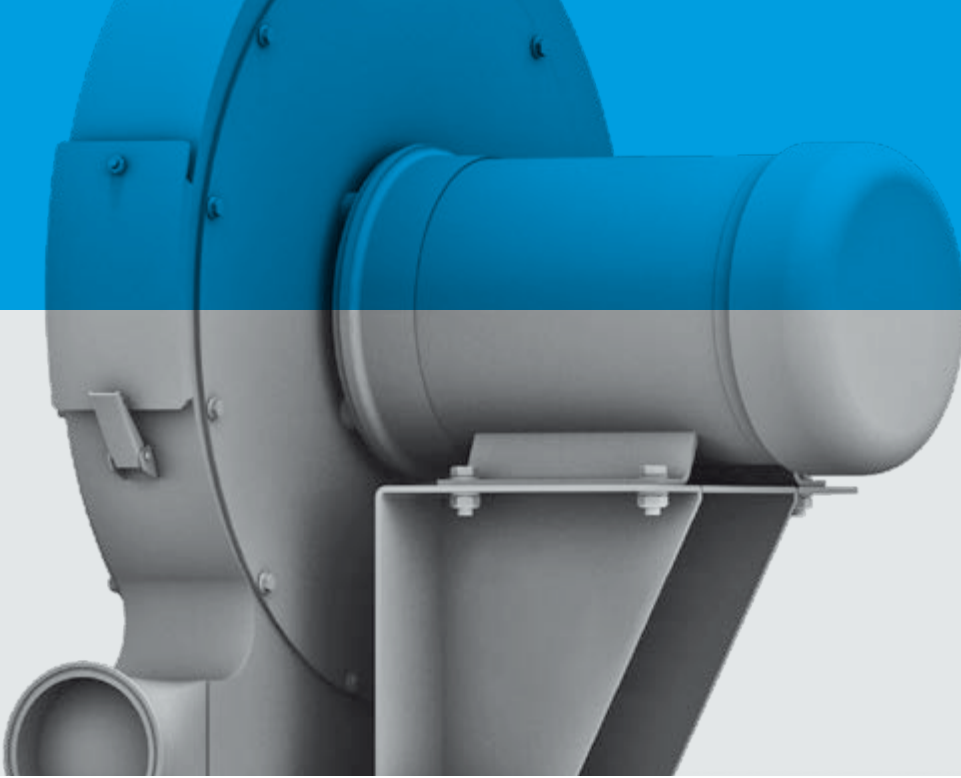
### **RD 94**

Max. volume flow 125 m<sup>3</sup>/min, max. pressure increase 9,600 Pa, with system-specific insulation position, used during the production of cigarettes for fixing during the production.



### **S-XP 220/40 – 200/10**

Max. volume flow 30 m<sup>3</sup>/min, max. pressure increase 15,000 Pa, very compact and high-performance fan that operates with 12,000 rpm and offers a very high pressure, with special intake filter, used in the food industry for drying bottles after being filled.



**S-HE 450/125 – 50/1,1**

Max. volume flow 100 m<sup>3</sup>/min, max. pressure increase 700 Pa, Fan version with special fastening elements for the integration in the system, used by a leading manufacturer for laundry machines for the machines that pull the washing into the ironing machine.

**2E 04**

Max. volume flow 10 m<sup>3</sup>/min, max. pressure increase 350 Pa, dual fan with high volume flow and customer-specific fastening elements, used in the production of plastic film for eliminating the electrostatic charge caused by ionised air.

**Elektor**  
airsystems gmbh

**Imprint:**

Elektor airsystems gmbh  
Hellmuth-Hirth-Str. 2  
73760 Ostfildern, Germany  
Phone: +49 (0)711 31973-0  
Fax: +49 (0)711 31973-5000  
info@elektor.com  
www.elektor.com



Elektror airsystems gmbh  
Hellmuth-Hirth-Str. 2  
73760 Ostfildern, Germany  
Phone: +49 (0)711 31973-0  
Fax: +49 (0)711 31973-5000  
info@elektror.com

