

EcoBlue SOLENOID DIAPHRAGM PUMP



ברלין טכנולוגיות בע"מ
שדרות גן רווה 13, יבנה, 8122214
<http://www.berlintech.co.il/>
mail@berlintech.co.il
טלפון: 073-7597171
פקס: 08-6638120

Compact - Economical - High quality

SOLENOID DIAPHRAGM PUMP FOR MICRO DOSING TASKS

sera SOLENOID DIAPHRAGM PUMP EcoBlue

The EcoBlue solves dosing tasks and offers great value for money. It also impresses with the usual quality and reliability.

EXAMPLES OF APPLICATION

- Drinking water treatment
- Waste water treatment
- Chlorine based drinking water treatment
- Pool equipment
- Agriculture
- Food and beverage
- etc.

ADVANTAGES AT A GLANCE

- Low investment costs
- Available from stock
- High quality materials
- Compact packaging incl. dosing set
- Service reduced
- Low maintenance costs
- Leak-free
- Unlimitedly safe to run dry
- Easy to use
- Light total weight

The EcoBlue is available in three designs:

EcoBlue

- Manual mode
- Stroke frequency adjustment in 10 steps
- Continuously adjustable stroke length adjustment

EcoBlue Pro

- Manual mode
- Stroke frequency adjustment in 10 steps
- Continuously adjustable stroke length adjustment
- Impulse input 1:1
- Level input (LSLL)

EcoBlue Pro⁺

- Manual mode
- Stroke frequency adjustment in 10 steps
- Continuously adjustable stroke length adjustment
- Impulse input 1:1
- Level input (LSLL)
- Analogue input 4..20 mA
- External stop

APPLICATION

The EcoBlue series has a performance range from 2 to 15 l/h at up to 10 bar. The compact design allows a simple solution for manual mode or pulse mode proportional dosing to the flow.



OVERVIEW

MATERIAL

98% of all applications can be covered with only two material designs.

MATERIAL DESIGN I

(e.g. caustic soda lye, potash lye, iron-III-sulfate...)

PUMP BODY AND VALVES

- PP-FRP

VALVE BALLS

- PTFE

VALVE SEALS

- EPDM

WORKING DIAPHRAGM

- PTFE-covered

MATERIAL DESIGN II

(e.g. acids, disinfectant, surfactants, hydrogen peroxide...)

PUMP BODY AND VALVES

- PVC

VALVE BALLS

- PTFE

VALVE SEALS

- FPM

WORKING DIAPHRAGM

- PTFE-covered

ACCESSORIES

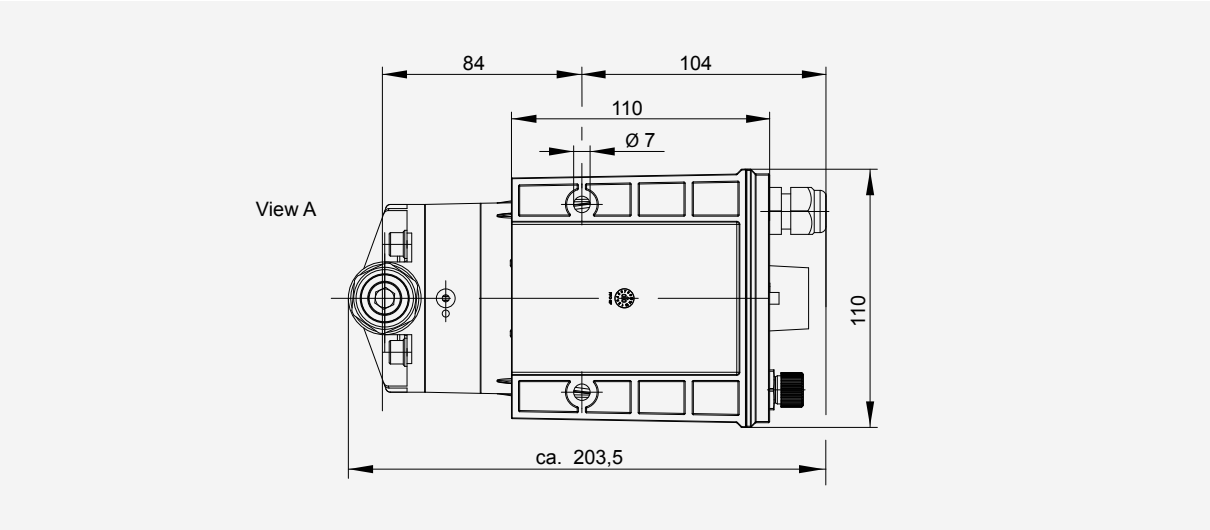
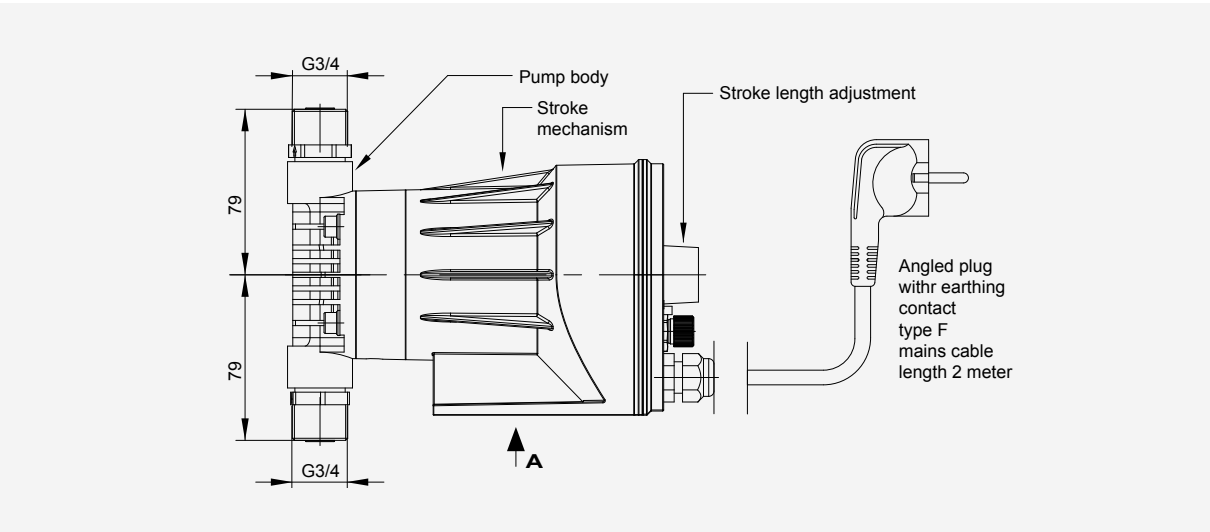
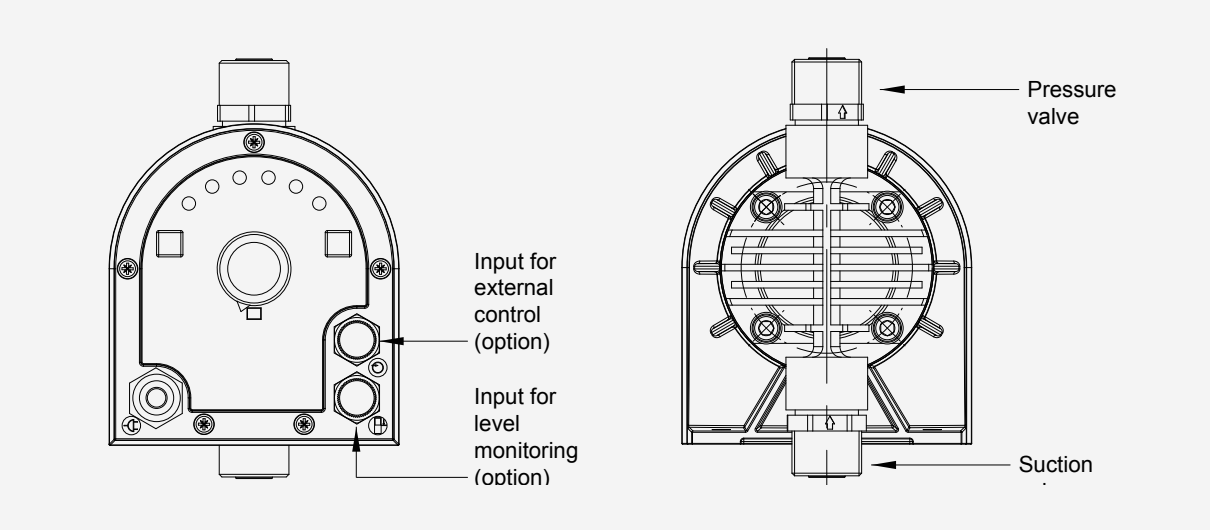
(INCLUDED IN SCOPE OF DELIVERY)

DOSING SET

- Foot valve
- Dosing valve
- Hose connections (4x)
- Dosing hose (7m)
- Weight for foot valve



DIMENSIONAL DRAWING



TECHNICAL DATA

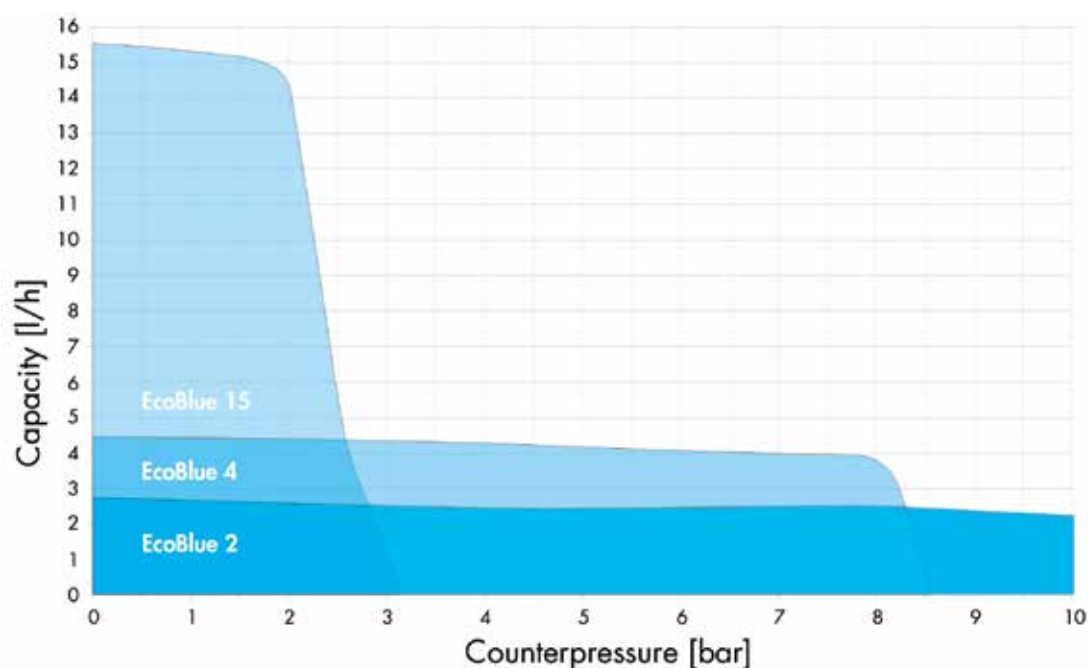
PUMP DATA

Type	Maximum permissible pressure at the pump $P_{2 \text{ max.}}$ bar	Nominal capacity ⁽¹⁾ Q_N at $P_{2 \text{ max.}}$		Suction height max. mWs	Permissible pressure at the pump inlet min./max. bar	Recommended nominal diameter of the connecting pipes DN	Nominal stroke frequency 50 Hz/60 Hz 1/min	Weight approx. kg
		50 Hz/60 Hz l/h	ml/hub					
EcoBlue 2	10	2	0,17	3	-0,3/0	5	200	1,6
EcoBlue 4	8	4	0,35	3	-0,3/0	5	200	1,6
EcoBlue 15	2	10	1,3	3	-0,3/0	5	200	1,6
	1	15						

ELECTRICAL CONNECTION DATA

Type	Power consumption W	Frequency Hz	Voltage 50 Hz/60 Hz V ~ 1	Rated current (50 Hz/60 Hz) A	Degree of protection IP	Recommended fuse
EcoBlue	< 30	50/60	220 - 240V	0,5	65	C6A

PRESSURE CHARACTERISTIC CURVES



FOLLOW US



sera ProDos GmbH
sera-Str. 1
34376 Immenhausen
Germany

Tel.: +49 5673 999 02
Fax: +49 5673 999 03
info-prodos@sera-web.com

www.sera-web.com

Local **sera** contact:

PRODUCT INFORMATION EC08LUEEN-1.61 02/4 **sera**® and **EcoBlue**® are registered trademarks by **sera** GmbH. Subject to change without notice. **sera** accepts no liability for errors or misprints.