



BAG2PACK® presents

Elapse®

The brand new individual pouch



ברלין טכנולוגיות בע"מ
8122214, יבנה, 13 רוה גן שדרות
<http://www.berlintech.co.il/>
mail@berlintech.co.il
טלפון: 08-6638100
פקס: 08-6638120

Economical

Light

Innovative

Pouch

Safe

Ecological



WHO WE ARE

- BAG2PACK® benefits from an important twenty-year-old experience in the fields of conception, innovation and industrialization in the sector of the flexible pouches for liquids.
- The aim is to bring innovation in terms of product and technology in the flexible conditioning.
- The company is oriented towards the European market and the global export.
- BAG2PACK® has moved its activity from services to manufacturing and now offers a brand new flexible pouch, very innovative for liquids: the Elipse® pouch.



THE ELIPSE® POUCH

New Concept



Elipse®

ELIPSE® is an innovative pouch made from a co-extruded or complex plastic film for the conditioning of non fizzy liquids in volumes from 70 ml to 500 ml. This individual pouch fits perfectly with the new consumerism trend :
the « *Nomadism* ».

Economical

Light

Innovative

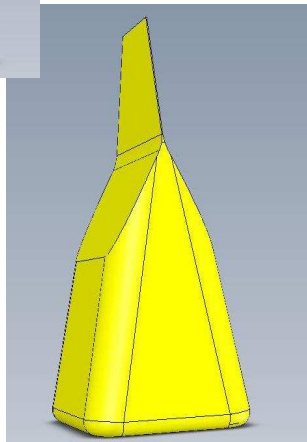
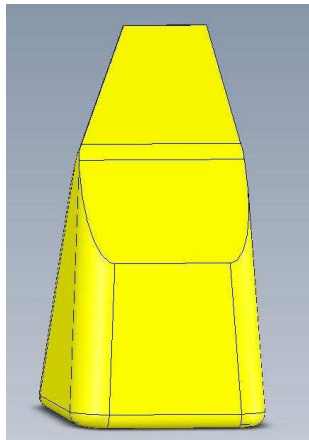
Pouch

Safe

Ecological



ADVANTAGES



- Original triangular shape, allows an easy and practical handling so as to be brought everywhere: at school, at work, when doing sports...

- Self standing pouch, with a perfectly stable rectangular base.

- Upgrade storage, adapted to the distribution in stores as well as for the consumer at home.

- Significant costs reduction for the manufacturer in comparison with a bottle or a cardboard brick

Economical

Light

Innovative

Pouch

Safe

Ecological



ADVANTAGES



Elapse®



- The top of the pouch is made of a valve included in the material and protected by a sealed tab that allows:

- An Easy Opening System (EOS) thanks to the precut
- No straw and no cap needed
- No liquid leaking if the pouch, once opened, goes upside down thanks to the self-locking valve
- Safe and hygienic protection

Economical

Light

Innovative

Pouch

Safe

Ecological



ENVIRONMENTAL IMPACT



- Volume and weight waste reduction
- Optimization of transport costs, reduction of the CO² balance

Elapse®

- A recycling by non polluting incineration (energy recovery from waste) o recycling in industry.

Economical Light Innovative Pouch Safe Ecological



APPLICATIONS

Elapse® is suitable for the conditioning of non fizzy liquids and viscous products such as dairy products, fruit juices, flavored and mineral waters, but also cosmetic products such as shampoo, cleaning soap...





INDUSTRIAL STRATEGY

- BAG2PACK® provides an automatic filler equipment for the packaging of liquids and the Elipse® packaging material in printed film reels.
- The company has developed the horizontal production of preformed films, but also the automatic conditioning filler VFFS-type with a capacity of 4000 pouches/hour for the packaging of liquid or viscous products.
- In terms of R&D, the company is already working on the development of the aseptic technology (long shelf life).





COMMERCIAL STRATEGY

In the future BAG2PACK® plans to create partnerships in Europe and abroad to guarantee the local production of packaging, so as to be closer to its future clients.



To do so, BAG2PACK® is relying on its commercial network but also on its technical partnership with SILVALAC (Armando Alvarez Group): its supplier of films for packaging.



COMMERCIAL NETWORK



Thanks to the experience of its executives, BAG2PACK® counts on a network of sales representatives and distributors/agents already established in many continents (Europe, North America, Latin America, Africa, Near/Middle East...)



TARGET MARKETS



- Our participations in the World Food Process Exhibition IPA/SIAL and Packaging 2010 – during which Elipse® was awarded one of the 7 « *Coups de Coeur* » (Best Innovations) by the Committee of Experts, among the 243 registered innovations – have aroused a great interest in the food industry and in the cosmetic sector.
- Project studies are underway in the sectors of milky products, drinks and cosmetic products.

Economical

Light

Innovative

Pouch

Safe

Ecological



60, rue Pasteur
94800 Villejuif

www.bag2pack.fr

info@bag2pack.fr

Tél : 01 46 58 36 57

Fax: 01 46 58 28 50

Economical

Light

Innovative

Pouch

Safe

Ecological